

**Round 5 results — Run sab20.5.4.dfo submitted from sabir**

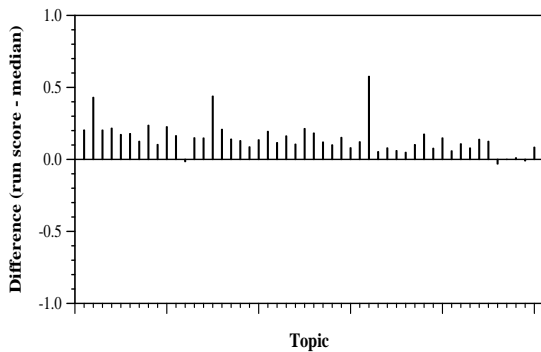
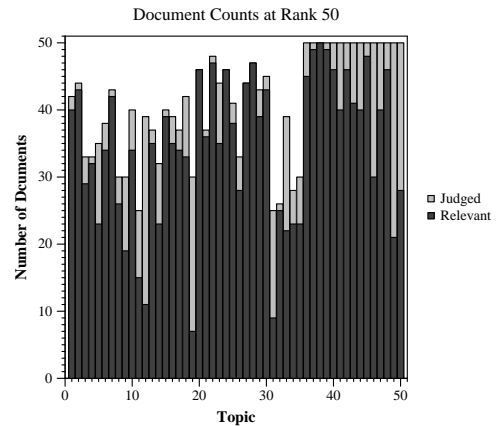
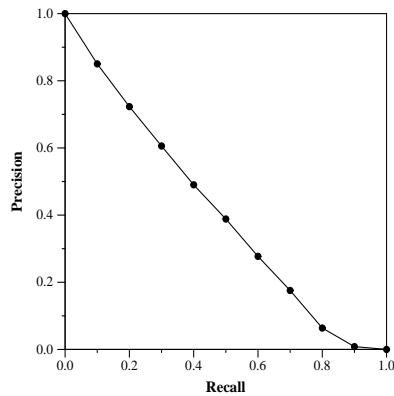
**Run Description**

SMART vector DFO run. Same retrieval parameters as in Round 4 dfo run. Round 4 official run indexing was buggy (I indexed Round 4 metadata but Round 3 JSON docs). Here:Base Lnu.ltu weights, with doc indexing = 0.4 metadoc\_Lnu\_weighting + 0.6 JSON\_Lnu\_weighting if a JSON doc exists (= straight Lnu weighting if only metadata info).Run DFO algorithm (the runs are described in my TREC 2005 Routing track, and later, eg 2017 core track). Use relevance info on Rounds 1+2+3+4 collections to expand and optimize weights on that collection. Expand to top 50 terms. Optimize ignoring top 30 nonrel docs (to accomodate incomplete judgements).

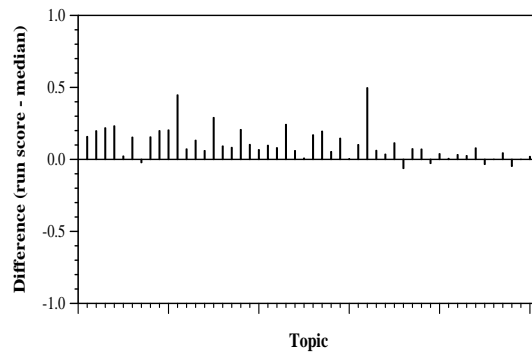
Summary Statistics	
Run ID	sab20.5.4.dfo
Topic type	feedback
Contributed to judgment sets?	yes

Overall measures	
Number of topics	50
Total number retrieved	49904
Total relevant	10910
Total relevant retrieved	7732
MAP	0.4061
Mean Bpref	0.6078
Mean NDCG@20	0.7791
Mean RBP(p=0.5)	0.8902 +0.0005

Document Level Averages	
	Precision
At 5 docs	0.9600
At 10 docs	0.8940
At 15 docs	0.8427
At 20 docs	0.8210
At 30 docs	0.7720
R-Precision	
Exact	0.4377



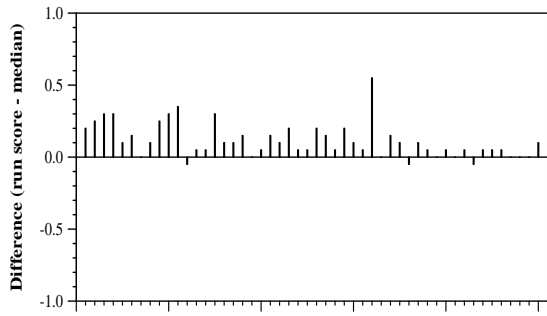
Per-topic difference from median bpref for all Round 4 runs



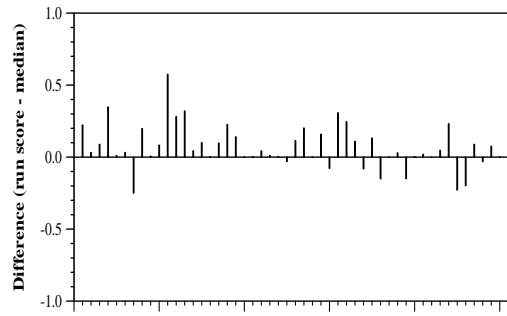
Per-topic difference from median NDCG@20 for all Round 4 runs

Round 5 results — Run sab20.5.4.dfo submitted from sabir

---



Per-topic difference from median P@20 for all Round 4 runs



Per-topic difference from median RBP(p=0.5) for all Round 4 runs