

Round 5 results — Run sab20.5.3.metadocs_m submitted from sabir

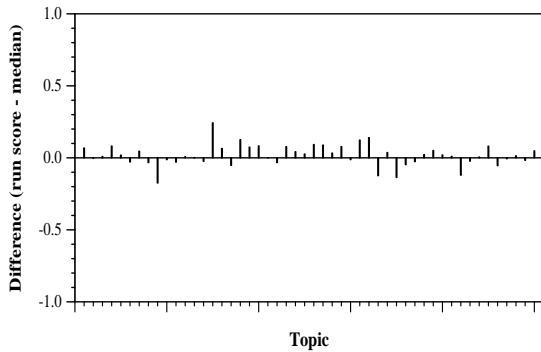
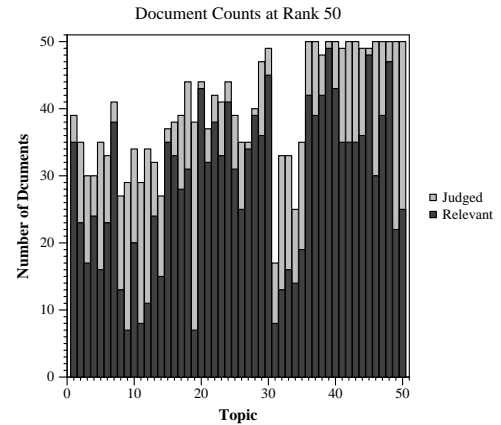
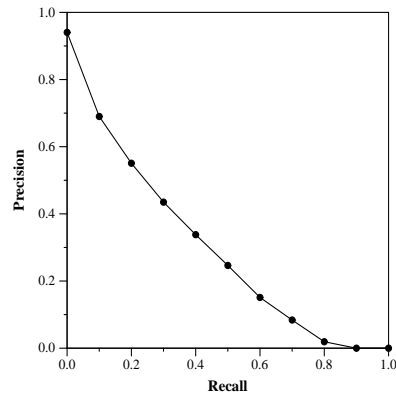
Run Description

Same retrieval and indexing as in Round 3 metadocs_m run. Standard SMART vector run based on Lnu docs, ltu query weighting. Doc indexing - if only metadata info exists for a docid, that is used with Lnu weights. Each JSON doc is assigned final indexing as $0.5 * \text{Metadata_Lnu_vector} + 0.7 * \text{JSON_Lnu_vector}$. After inverted retrieval, the highest similarity for each cord_uid is used.

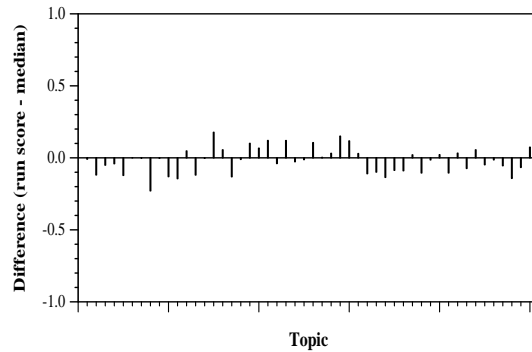
Summary Statistics	
Run ID	sab20.5.3.metadocs_m
Topic type	automatic
Contributed to judgment sets?	no

Overall measures	
Number of topics	50
Total number retrieved	49916
Total relevant	10910
Total relevant retrieved	6820
MAP	0.2918
Mean Bpref	0.4828
Mean NDCG@20	0.6559
Mean RBP(p=0.5)	0.7149 +0.0029

Document Level Averages	
	Precision
At 5 docs	0.8000
At 10 docs	0.7580
At 15 docs	0.7333
At 20 docs	0.7130
At 30 docs	0.6527
R-Precision	
Exact	0.3564

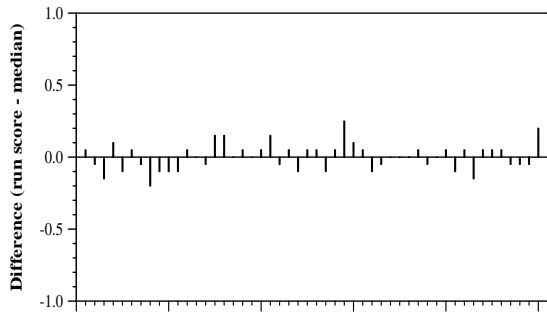


Per-topic difference from median bpref for all Round 4 runs

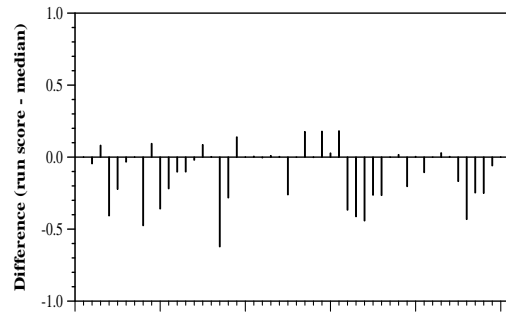


Per-topic difference from median NDCG@20 for all Round 4 runs

Round 5 results — Run sab20.5.3.metadocs_m submitted from sabir



Per-topic difference from median P@20 for all Round 4 runs



Per-topic difference from median RBP(p=0.5) for all Round 4 runs