

Round 5 results — Run sab20.5.1.meta.docs submitted from sabir

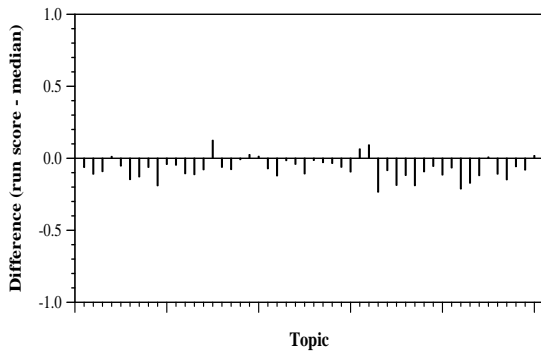
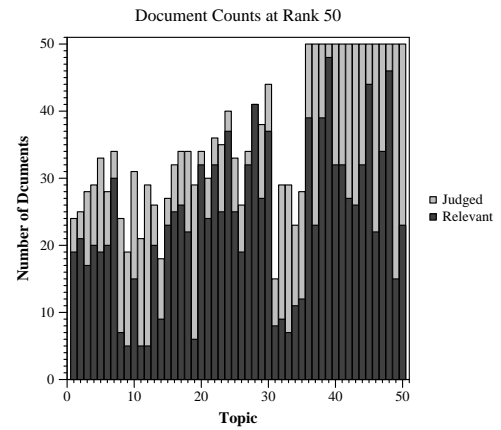
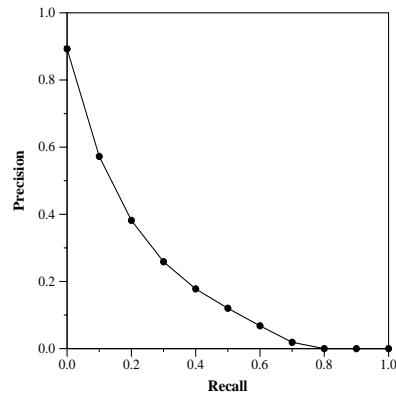
Run Description

Same retrieval and indexing as in Round 1 metadocs run. Standard SMART vector run based on Lnu docs, Itu query weighting. Separate inverted files for metadata and JSON docs. Final score is 1.5 * metadata score + JSON score.

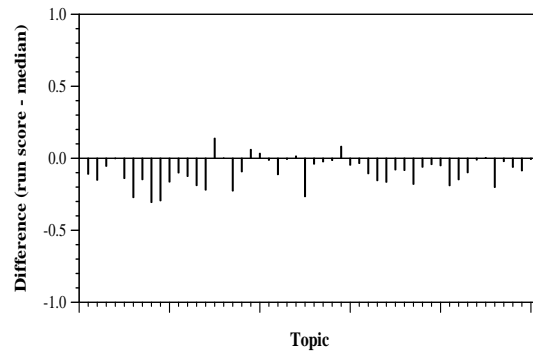
Summary Statistics	
Run ID	sab20.5.1.meta.docs
Topic type	automatic
Contributed to judgment sets?	yes

Overall measures	
Number of topics	50
Total number retrieved	49935
Total relevant	10910
Total relevant retrieved	5514
MAP	0.1981
Mean Bpref	0.3928
Mean NDCG@20	0.5848
Mean RBP(p=0.5)	0.6980 +0.0007

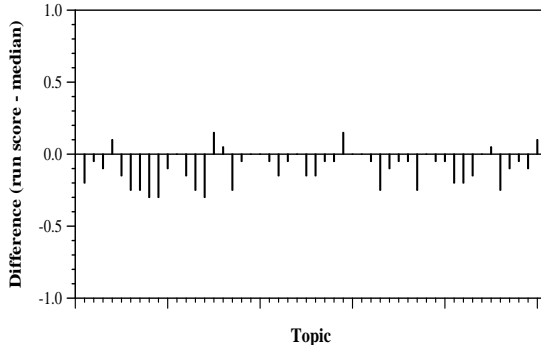
Document Level Averages	
	Precision
At 5 docs	0.7720
At 10 docs	0.7200
At 15 docs	0.6613
At 20 docs	0.6170
At 30 docs	0.5620
R-Precision	
Exact	0.2728



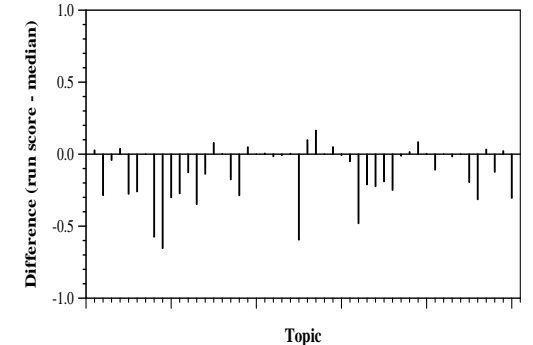
Per-topic difference from median bpref for all Round 4 runs



Per-topic difference from median NDCG@20 for all Round 4 runs



Per-topic difference from median P@20 for all Round 4 runs



Per-topic difference from median RBP(p=0.5) for all Round 4 runs