

Round 5 results — Run rk_ir_bdl_trf_brx_rr submitted from risklick

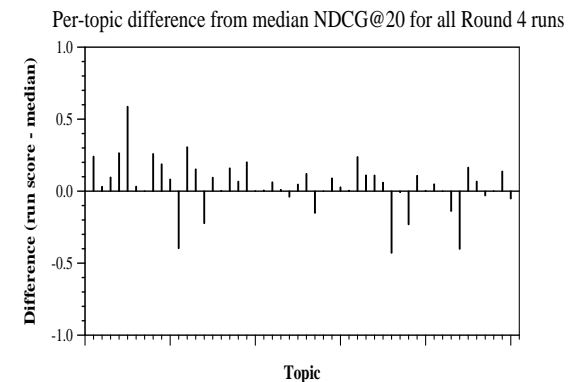
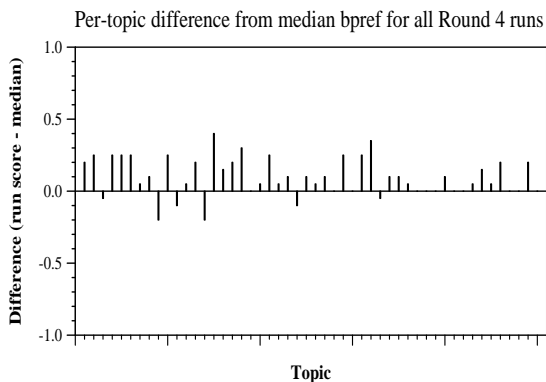
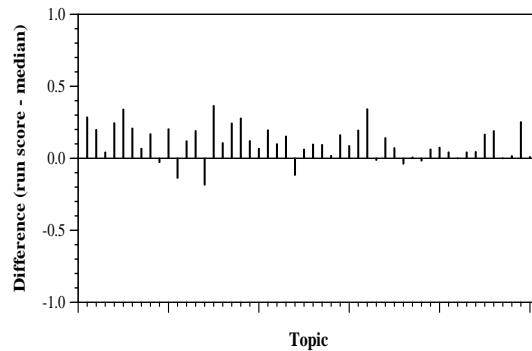
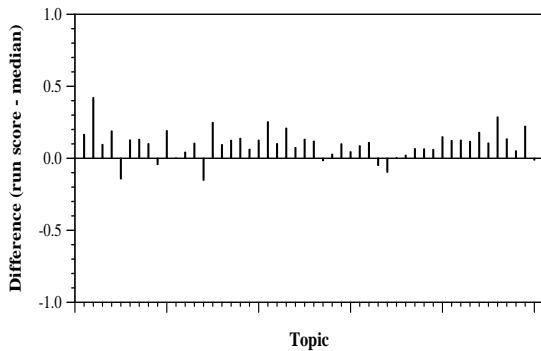
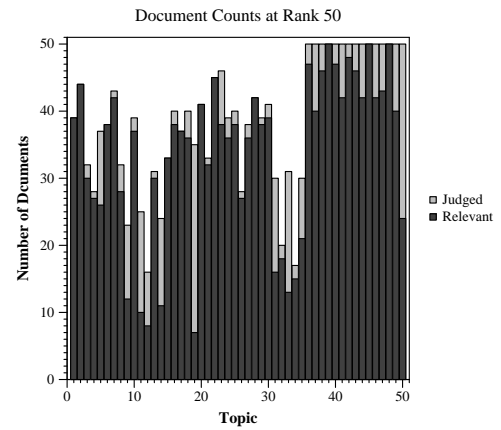
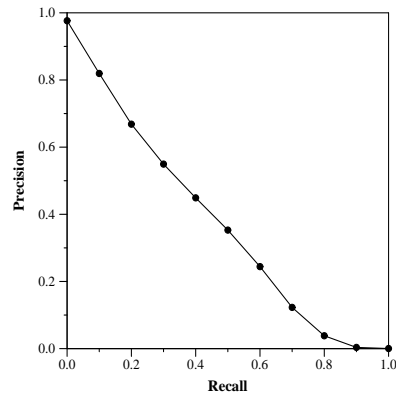
Run Description

A combination of classic information retrieval models (BM25, DFR and LM Dirichlet) with neural language models. Reciprocal-rank fusion with a k=60 was used to combined the runs.

Summary Statistics	
Run ID	rk_ir_bdl_trf_brx_rr
Topic type	feedback
Contributed to judgment sets?	yes

Overall measures	
Number of topics	50
Total number retrieved	48529
Total relevant	10910
Total relevant retrieved	7006
MAP	0.3719
Mean Bpref	0.5616
Mean NDCG@20	0.7826
Mean RBP(p=0.5)	0.8632 +0.0010

Document Level Averages	
	Precision
At 5 docs	0.9240
At 10 docs	0.8800
At 15 docs	0.8453
At 20 docs	0.8050
At 30 docs	0.7453
R-Precision	
Exact	0.4110



Per-topic difference from median P@20 for all Round 4 runs

Per-topic difference from median RBP(p=0.5) for all Round 4 runs