

Round 5 results — Run mpiid5_run1 submitted from mpiid5

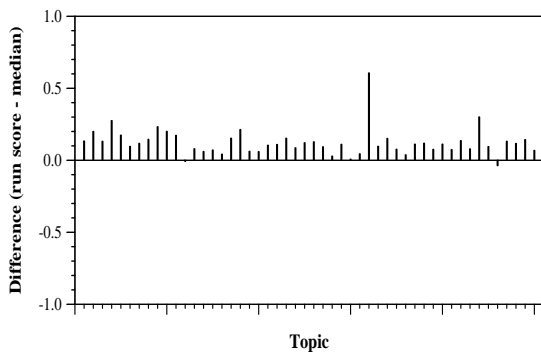
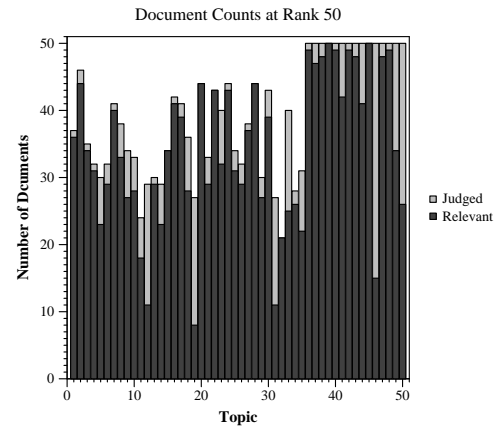
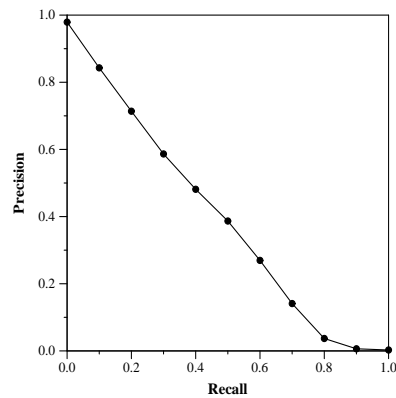
Run Description

We re-rank the top 2000 documents from the Anserini RM3 baseline (9th row). For the re-ranking method, we use the ELECTRA-Base model fine-tuned on the MSMARCO passage dataset. The model is later fine-tuned on the TREC COVID round 1-4 full-text collection. We use the question queries for re-ranking.

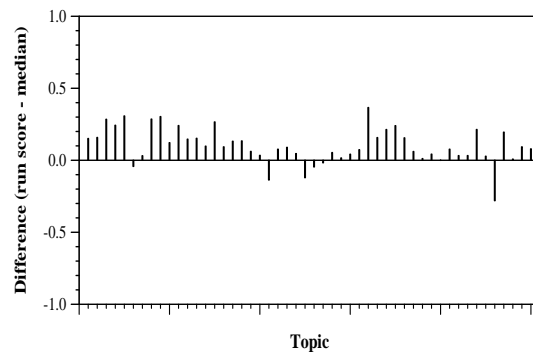
Summary Statistics	
Run ID	mpiid5_run1
Topic type	feedback
Contributed to judgment sets?	yes

Overall measures	
Number of topics	50
Total number retrieved	49904
Total relevant	10910
Total relevant retrieved	7339
MAP	0.3903
Mean Bpref	0.5873
Mean NDCG@20	0.7761
Mean RBP(p=0.5)	0.8535 +0.0007

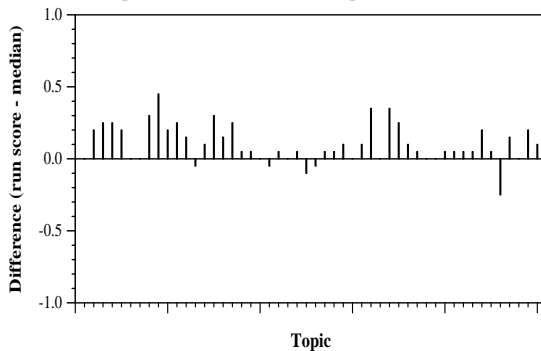
Document Level Averages	
	Precision
At 5 docs	0.9200
At 10 docs	0.8940
At 15 docs	0.8373
At 20 docs	0.8110
At 30 docs	0.7547
R-Precision	
Exact	0.4332



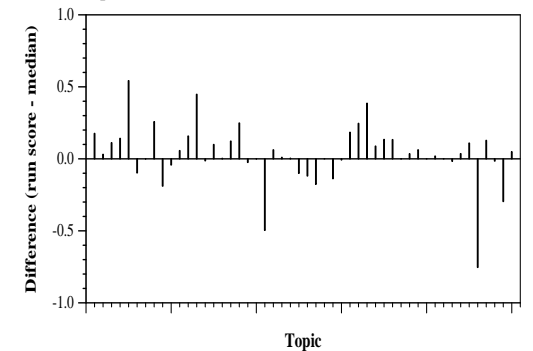
Per-topic difference from median bpref for all Round 4 runs



Per-topic difference from median NDCG@20 for all Round 4 runs



Per-topic difference from median P@20 for all Round 4 runs



Per-topic difference from median RBP(p=0.5) for all Round 4 runs