

**Round 5 results — Run HKPU-LGD-dPRF submitted from HKPU**

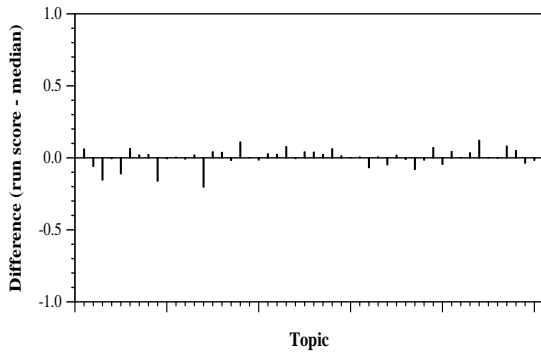
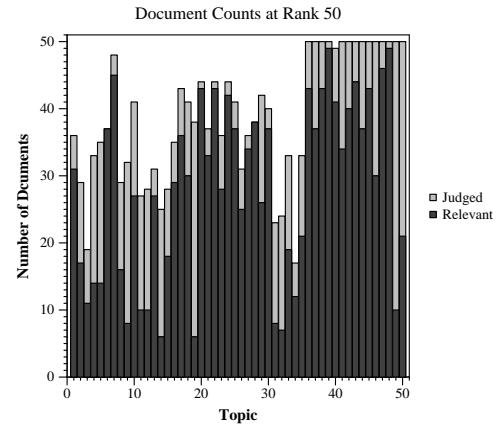
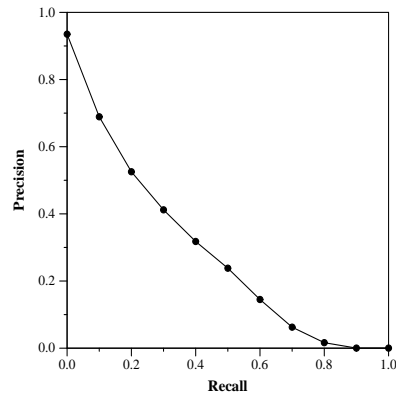
**Run Description**

The index is built from the combined title and abstract fields of the metadata file. Retrieval is performed by the information-based LGD model (Clinchant, S. and Gaussier, E., Information-based models for ad hoc IR. In Proceedings of the ACM SIGIR (2010), pp. 234-241), on long queries consisting of the combined Query, Question and Narrative. Document -based retrieval with pseudo-relevance feedback is employed.

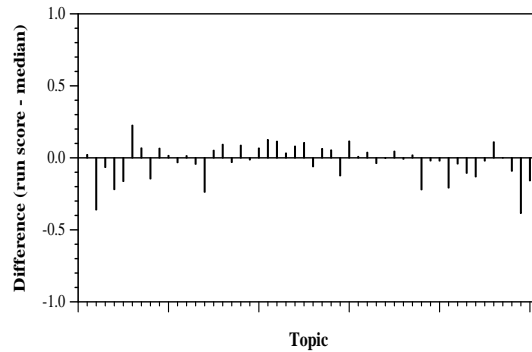
Summary Statistics	
Run ID	HKPU-LGD-dPRF
Topic type	automatic
Contributed to judgment sets?	yes

Overall measures	
Number of topics	50
Total number retrieved	49894
Total relevant	10910
Total relevant retrieved	6512
MAP	0.2824
Mean Bpref	0.4668
Mean NDCG@20	0.6494
Mean RBP(p=0.5)	0.6902 +0.0005

Document Level Averages	
	Precision
At 5 docs	0.7960
At 10 docs	0.7720
At 15 docs	0.7240
At 20 docs	0.7040
At 30 docs	0.6400
R-Precision	
Exact	0.3393



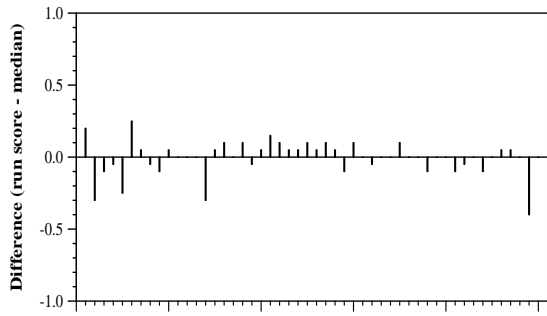
Per-topic difference from median bpref for all Round 4 runs



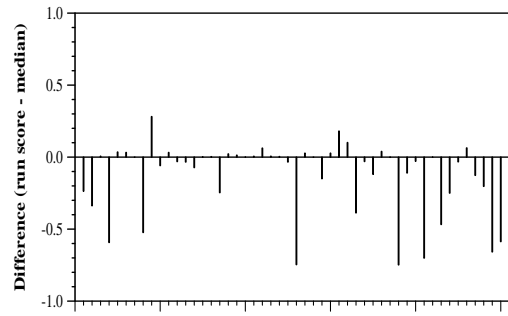
Per-topic difference from median NDCG@20 for all Round 4 runs

Round 5 results — Run HKPU-LGD-dPRF submitted from HKPU

---



Topic  
Per-topic difference from median P@20 for all Round 4 runs



Topic  
Per-topic difference from median RBP(p=0.5) for all Round 4 runs