

Round 5 results — Run BRPHJ_logistic submitted from BRPHJ

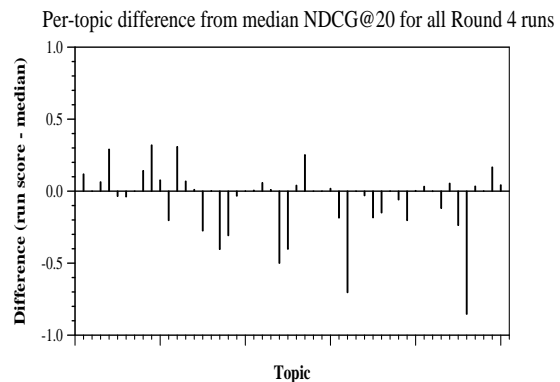
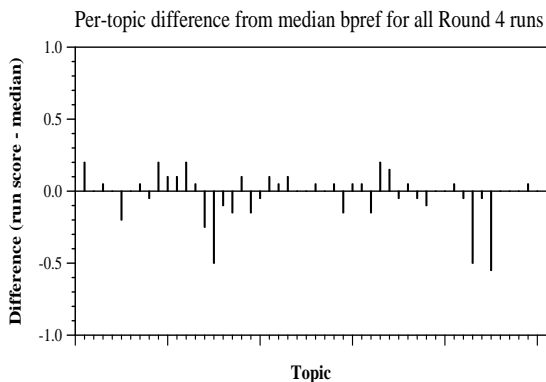
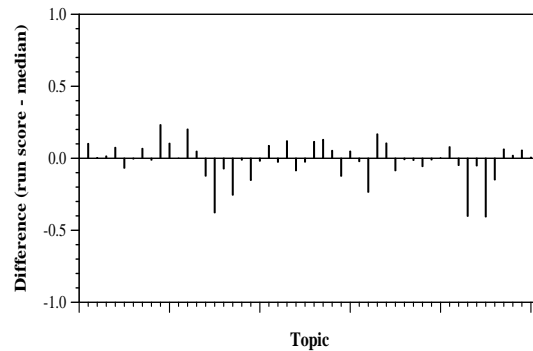
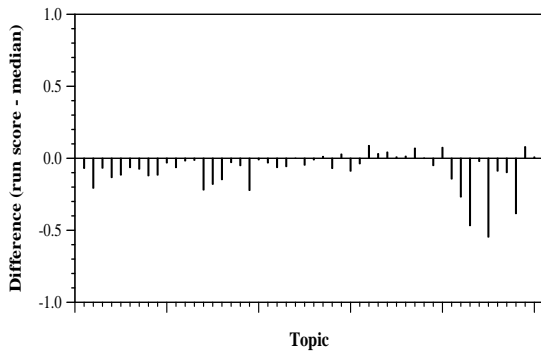
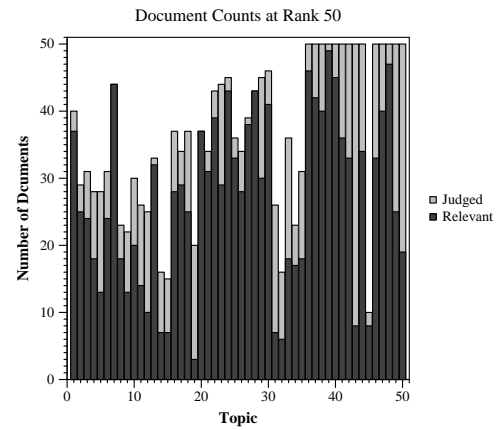
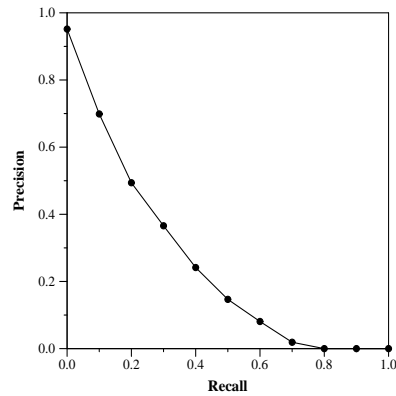
Run Description

BM25 results were re ranked using logistic regression model. Logistic regression model is trained using previous data with tf-idf inputs.

Summary Statistics	
Run ID	BRPHJ_logistic
Topic type	automatic
Contributed to judgment sets?	yes

Overall measures	
Number of topics	50
Total number retrieved	26267
Total relevant	10910
Total relevant retrieved	4798
MAP	0.2463
Mean Bpref	0.3865
Mean NDCG@20	0.6572
Mean RBP(p=0.5)	0.7654 +0.0015

Document Level Averages	
	Precision
At 5 docs	0.8320
At 10 docs	0.7920
At 15 docs	0.7427
At 20 docs	0.6880
At 30 docs	0.6333
R-Precision	
Exact	0.3128



Per-topic difference from median P@20 for all Round 4 runs

Per-topic difference from median RBP(p=0.5) for all Round 4 runs