

Round 4 results — Run sab20.4.metadocs_m submitted from sabir

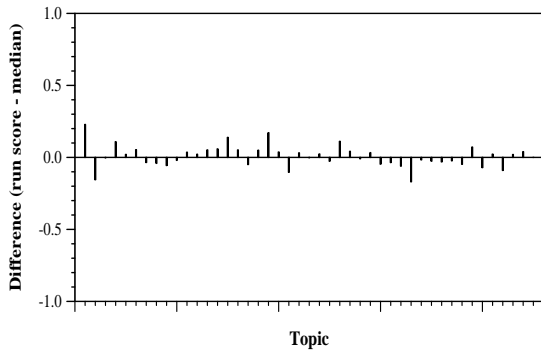
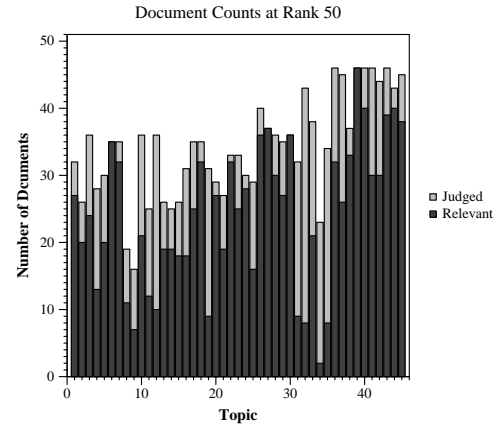
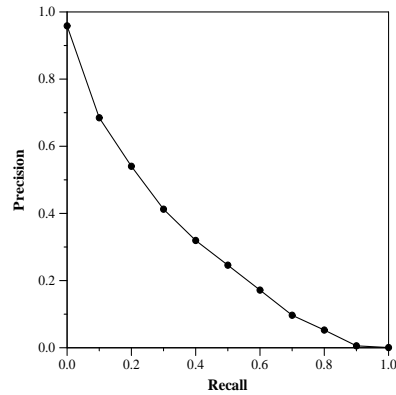
Run Description

Standard SMART vector run based on Lnu docs (pivot 130,slope.12 for JSON. pivot 110, slope.24 for metadata), ltu query weighting. Doc indexing: if only metadata info exists for a docid, that is used with Lnu weights. Each JSON doc is assigned final indexing as $0.4 * \text{Metadata_Lnu_vector} + 0.6 * \text{JSON_Lnu_vector}$. After inverted retrieval, the highest similarity for each cord_uid is used.

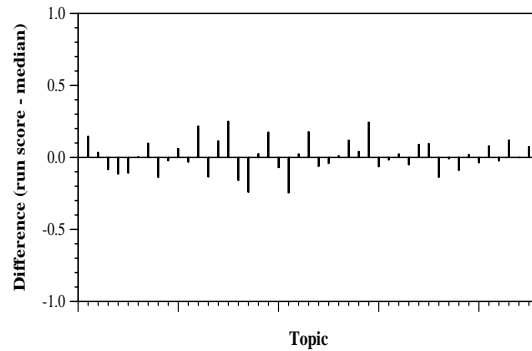
Summary Statistics	
Run ID	sab20.4.metadocs_m
Topic type	automatic
Contributed to judgment sets?	no

Overall measures	
Number of topics	45
Total number retrieved	44778
Total relevant	5824
Total relevant retrieved	3847
MAP	0.2935
Mean Bpref	0.5242
Mean NDCG@20	0.6358
Mean RBP(p=0.5)	0.7898 +0.0231

Document Level Averages	
	Precision
At 5 docs	0.7911
At 10 docs	0.7133
At 15 docs	0.6785
At 20 docs	0.6533
At 30 docs	0.5741
R-Precision	
Exact	0.3392

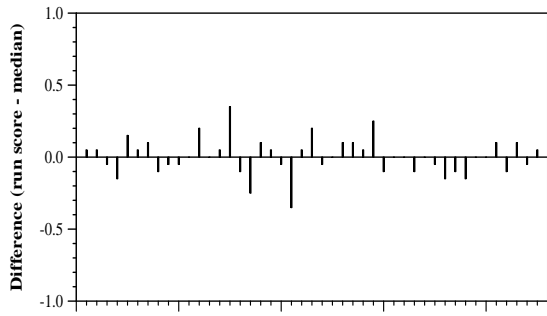


Per-topic difference from median bpref for all Round 4 runs

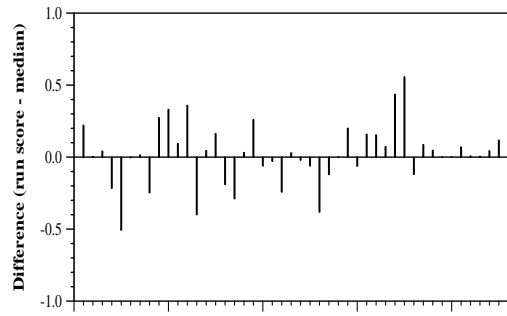


Per-topic difference from median NDCG@20 for all Round 4 runs

Round 4 results — Run sab20.4.metadocs_m submitted from sabir



Per-topic difference from median P@20 for all Round 4 runs



Per-topic difference from median RBP(p=0.5) for all Round 4 runs