

Round 4 results — Run HKPU-Gos1-pPRF submitted from HKPU

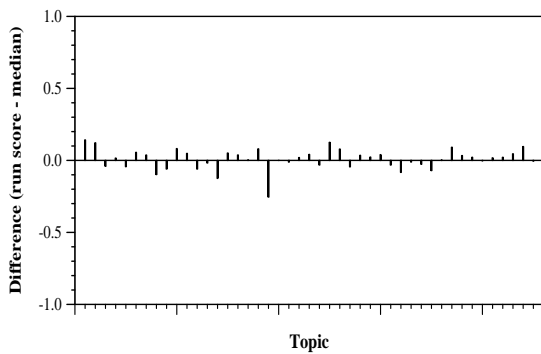
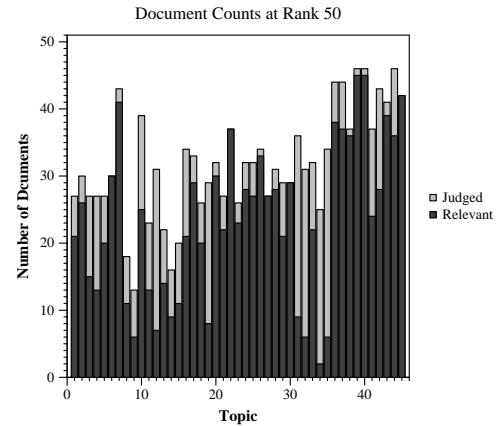
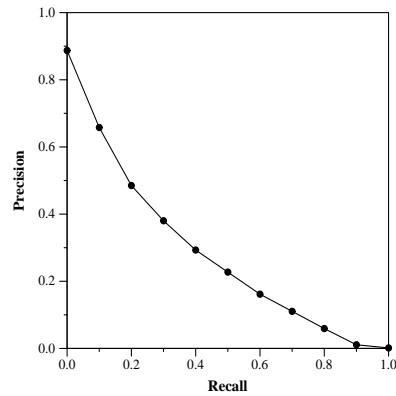
Run Description

The index is built from the combined title and abstract fields of the metadata file. Retrieval is performed with the scoring function #1 presented in the Conclusion section (p.469) of the paper by Goswami et al. (Goswami et al, Exploring the space of information retrieval term scoring functions, Information Processing and Management, 53 (2017), p.454-472), on long queries consisting of the combined Query, Question and Narrative. Passage-based retrieval with pseudo-relevance feedback is employed.

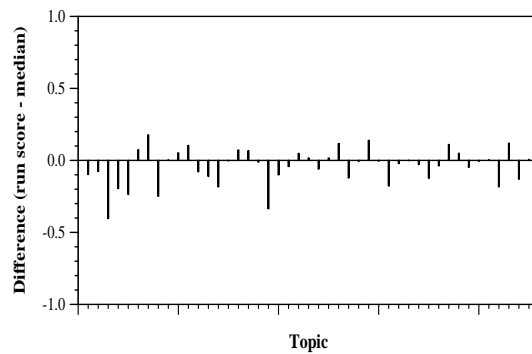
Summary Statistics	
Run ID	HKPU-Gos1-pPRF
Topic type	automatic
Contributed to judgment sets?	yes

Overall measures	
Number of topics	45
Total number retrieved	44982
Total relevant	5824
Total relevant retrieved	3732
MAP	0.2746
Mean Bpref	0.5251
Mean NDCG@20	0.5856
Mean RBP(p=0.5)	0.6901 +0.0007

Document Level Averages	
	Precision
At 5 docs	0.7467
At 10 docs	0.7156
At 15 docs	0.6622
At 20 docs	0.6111
At 30 docs	0.5481
R-Precision	
Exact	0.3169

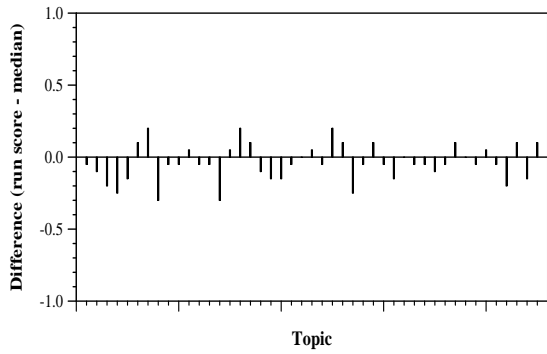


Per-topic difference from median bpref for all Round 4 runs

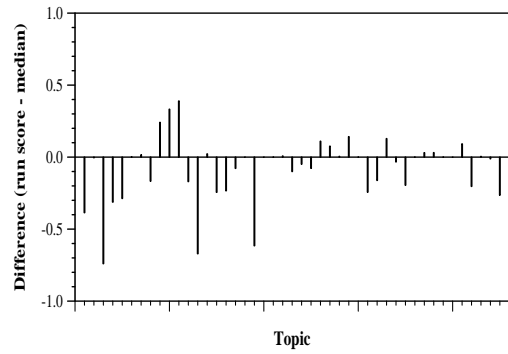


Per-topic difference from median NDCG@20 for all Round 4 runs

Round 4 results — Run HKPU-Gos1-pPRF submitted from HKPU



Per-topic difference from median P@20 for all Round 4 runs



Per-topic difference from median RBP(p=0.5) for all Round 4 runs