

Round 3 results — Run l2r submitted from risklick

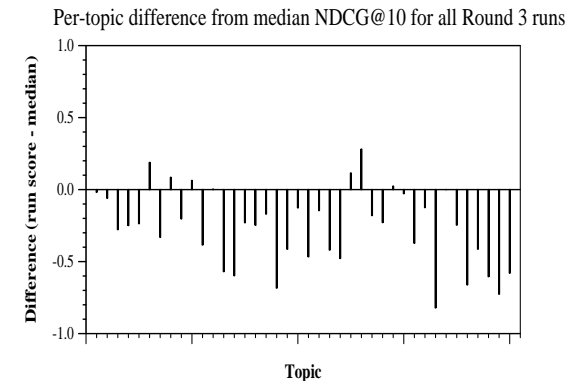
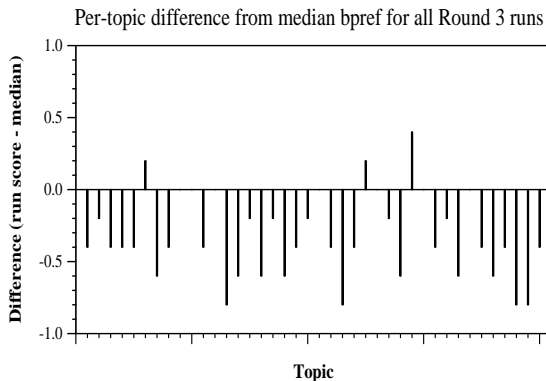
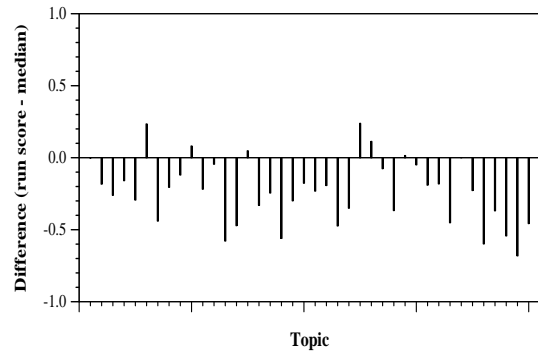
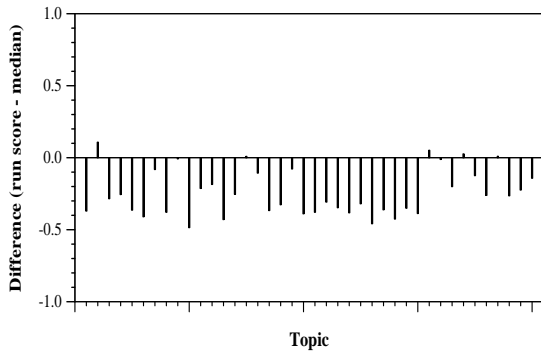
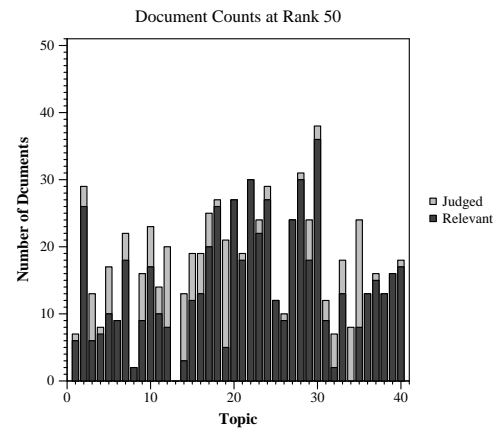
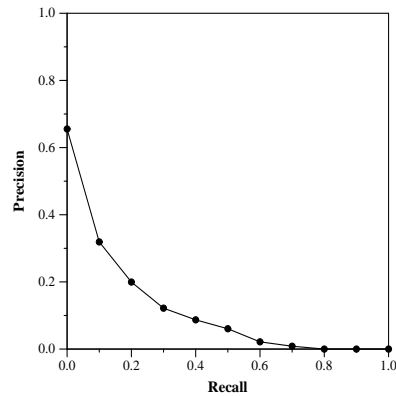
Run Description

Learning to rank on a retrieval set based on basic IR models, enriched with covid-related ontologies.

Summary Statistics	
Run ID	l2r
Topic type	feedback
Contributed to judgment sets?	no

Overall measures	
Number of topics	40
Total number retrieved	3227
Total relevant	4698
Total relevant retrieved	1015
MAP	0.0995
Mean Bpref	0.2229
Mean NDCG@10	0.3608
Mean RBP(p=0.5)	0.3856 +0.5192

Document Level Averages	
	Precision
At 5 docs	0.3900
At 10 docs	0.3850
At 15 docs	0.3700
At 20 docs	0.3550
At 30 docs	0.3308
R-Precision	
Exact	0.1814



Per-topic difference from median P@5 for all Round 3 runs

Per-topic difference from median RBP(p=0.5) for all Round 3 runs