

Round 3 results — Run SFDC-fus12-enc3-tf3 submitted from SFDC

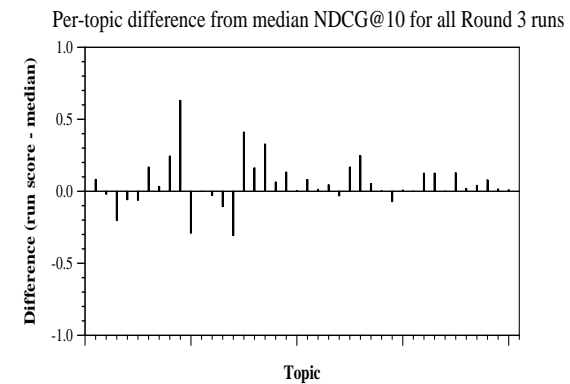
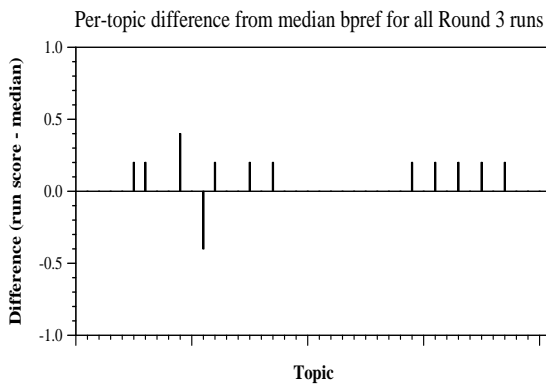
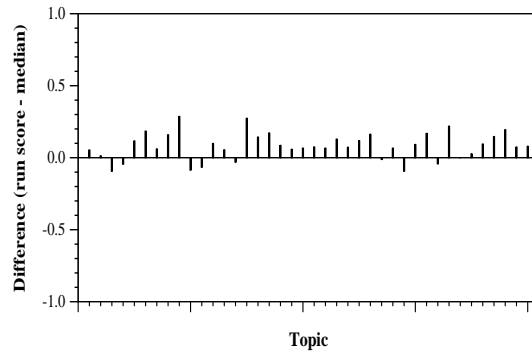
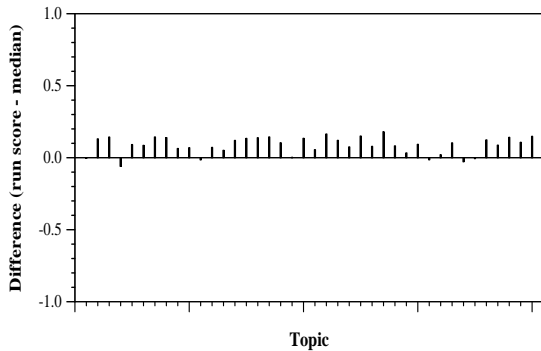
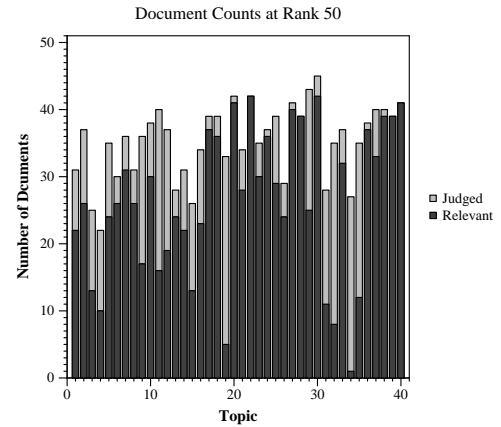
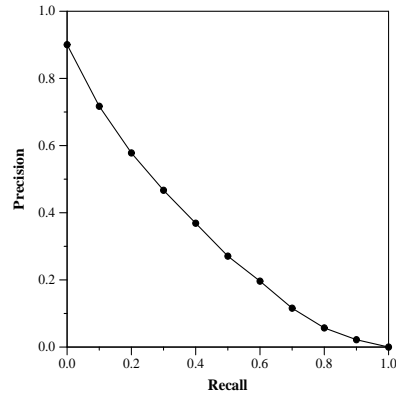
Run Description

Fusion run of Linear(Siamese-BERT paragraph-level semantic retrieval, TFIDF), and Anserini BM25 Function: RRF(Anserini-Rnd2-1, Anserini-Rnd2-2, 0.7 * semantic-3 + 0.3 * TFIDF-3)

Summary Statistics	
Run ID	SFDC-fus12-enc3-tf3
Topic type	automatic
Contributed to judgment sets?	no

Overall measures	
Number of topics	40
Total number retrieved	39921
Total relevant	4698
Total relevant retrieved	3355
MAP	0.3182
Mean Bpref	0.5509
Mean NDCG@10	0.6716
Mean RBP(p=0.5)	0.7052 +0.0101

Document Level Averages	
	Precision
At 5 docs	0.7650
At 10 docs	0.7375
At 15 docs	0.7150
At 20 docs	0.6700
At 30 docs	0.6225
R-Precision	
Exact	0.3622



Per-topic difference from median P@5 for all Round 3 runs

Per-topic difference from median RBP(p=0.5) for all Round 3 runs