

Round 3 results — Run R3QTETRA submitted from IRIT_L SIS_FR

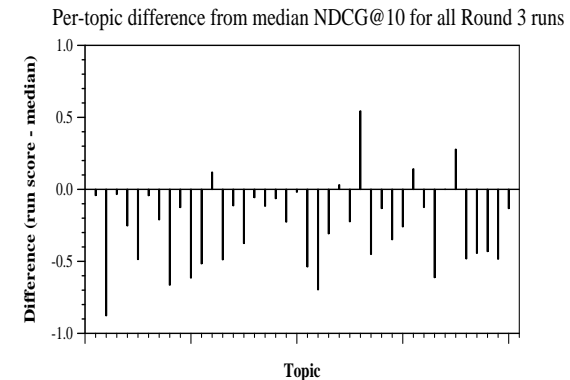
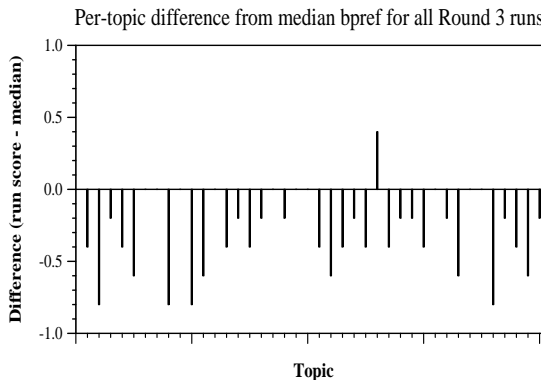
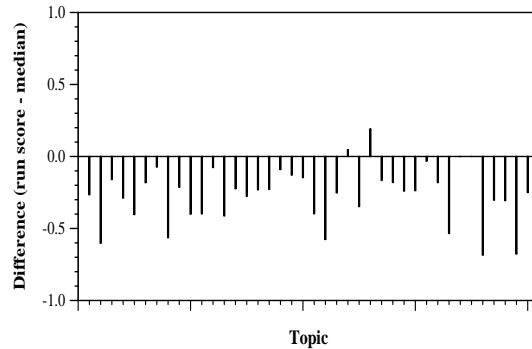
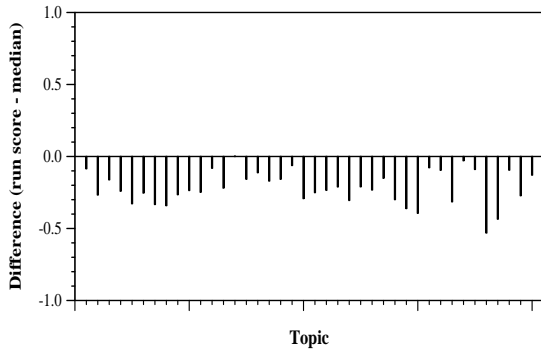
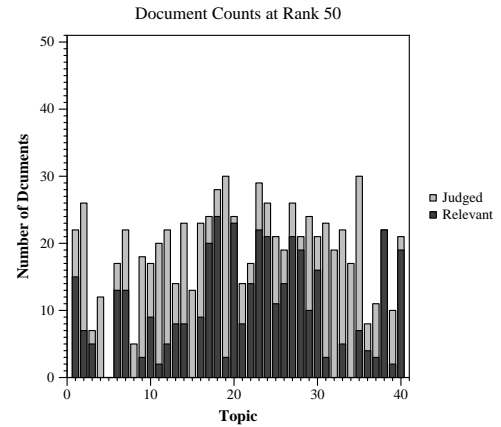
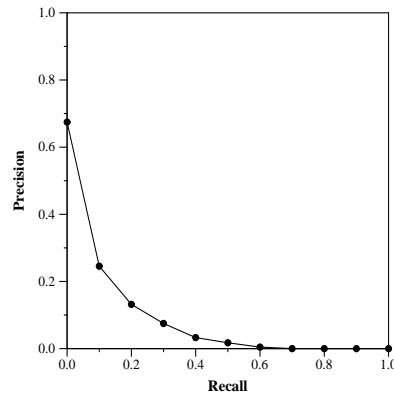
Run Description

Documents have been pre-treated to extract phrases using Tetralogie system. Topics have been also pre-treated for key-phrase extraction. Documents have then been indexed using Indri and search done using BM25 Indri search core. Query field has been used in this run.

Summary Statistics	
Run ID	R3QTETRA
Topic type	manual
Contributed to judgment sets?	no

Overall measures	
Number of topics	40
Total number retrieved	33572
Total relevant	4698
Total relevant retrieved	1500
MAP	0.0744
Mean Bpref	0.2475
Mean NDCG@10	0.3306
Mean RBP(p=0.5)	0.4021 +0.2363

Document Level Averages	
	Precision
At 5 docs	0.4200
At 10 docs	0.3725
At 15 docs	0.3100
At 20 docs	0.2825
At 30 docs	0.2350
R-Precision	
Exact	0.1318



Per-topic difference from median P@5 for all Round 3 runs

Per-topic difference from median RBP(p=0.5) for all Round 3 runs