

Round 3 results — Run OHSU_BCB_round3-bcb submitted from OHSU

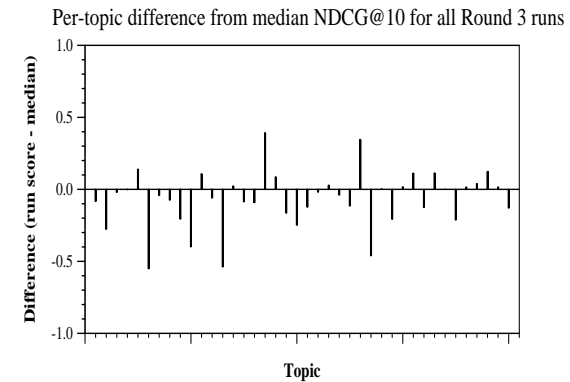
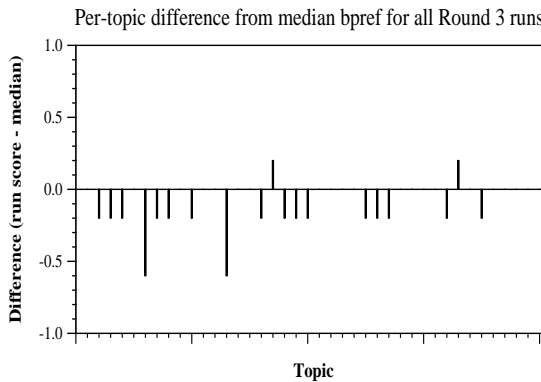
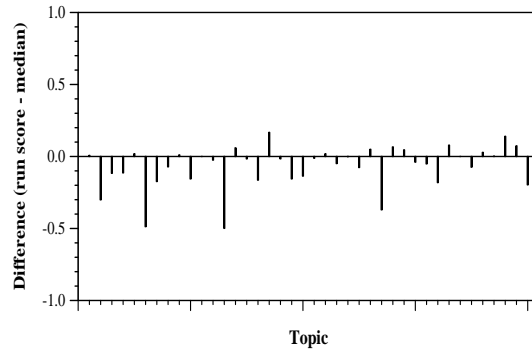
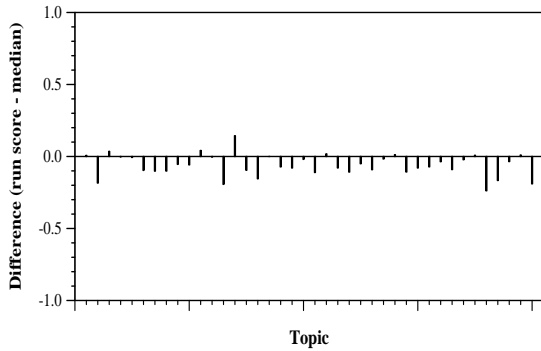
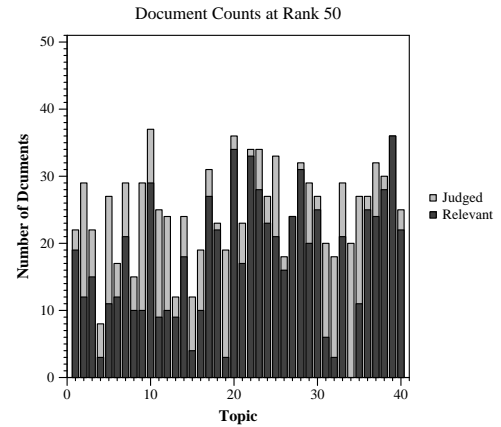
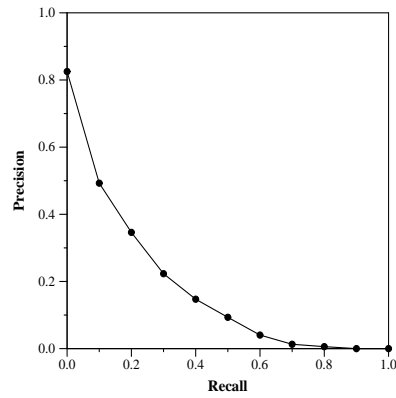
Run Description

Search queries were generated using the query, question and narrative field and executed using Anserini on the full text index. The scores for these runs were normalized, and a document's total score was generated as a sum from the scores in each of these queries.

Summary Statistics	
Run ID	OHSU_BCB_round3-bcb
Topic type	automatic
Contributed to judgment sets?	no

Overall measures	
Number of topics	40
Total number retrieved	38275
Total relevant	4698
Total relevant retrieved	2403
MAP	0.1701
Mean Bpref	0.4048
Mean NDCG@10	0.5252
Mean RBP(p=0.5)	0.5815 +0.1021

Document Level Averages	
	Precision
At 5 docs	0.6200
At 10 docs	0.5800
At 15 docs	0.5300
At 20 docs	0.4963
At 30 docs	0.4417
R-Precision	
Exact	0.2354



Per-topic difference from median P@5 for all Round 3 runs

Per-topic difference from median RBP(p=0.5) for all Round 3 runs