

**Round 2 results — Run ucd\_cs\_r3 submitted from UCD\_CS**

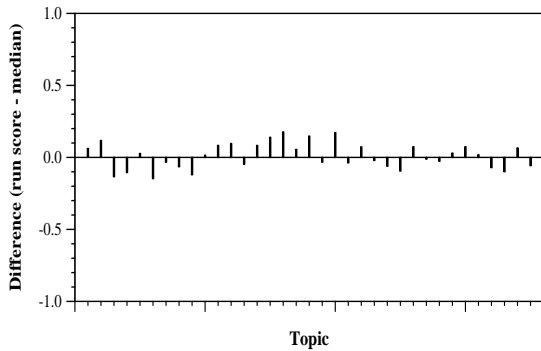
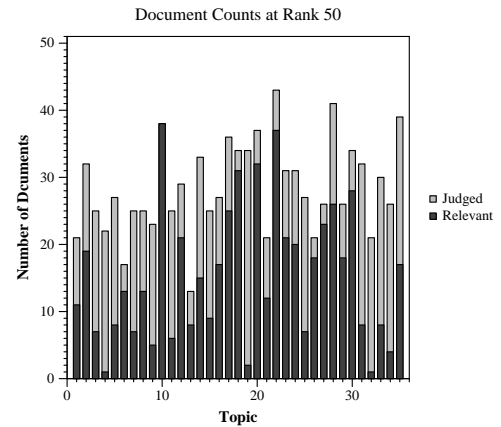
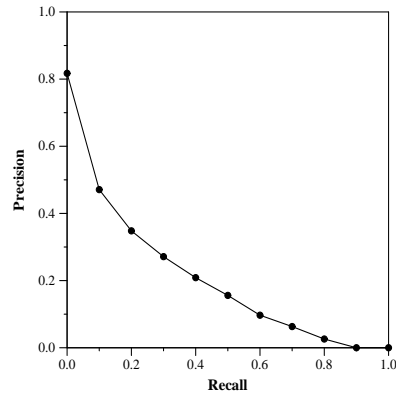
**Run Description**

This is a baseline without re-ranking, we use BM25 for retrieving 1000 documents per topic with parameters set up as reported in SLEDGE [1]. [1]: MacAvaney S, Cohan A, Goharian N. SLEDGE: A Simple Yet Effective Baseline for Coronavirus Scientific Knowledge Search. arXiv preprint arXiv:2005.02365. 2020 May 5.

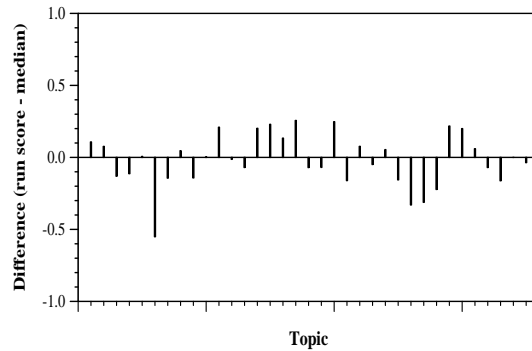
Summary Statistics	
Run ID	ucd_cs_r3
Topic type	automatic
Contributed to judgment sets?	no

Overall measures	
Number of topics	35
Total number retrieved	31184
Total relevant	3002
Total relevant retrieved	1748
MAP	0.1949
Mean Bpref	0.3801
Mean NDCG@10	0.4527
Mean RBP(p=0.5)	0.4932 +0.1276

Document Level Averages	
	Precision
At 5 docs	0.5429
At 10 docs	0.4886
At 15 docs	0.4438
At 20 docs	0.4114
At 30 docs	0.3657
R-Precision	
Exact	0.2510



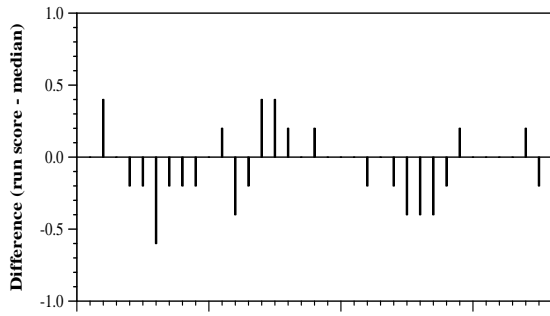
Per-topic difference from median bpref for all Round 2 runs



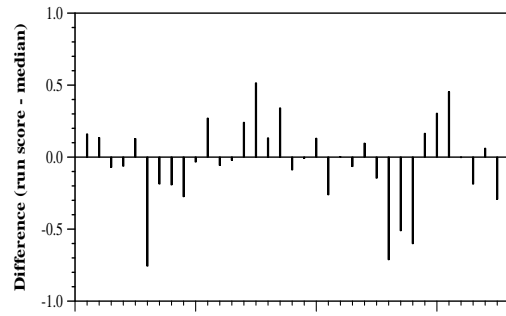
Per-topic difference from median NDCG@10 for all Round 2 runs

## Round 2 results — Run ucd\_cs\_r3 submitted from UCD\_CS

---



Per-topic difference from median P@5 for all Round 2 runs



Per-topic difference from median RBP(p=0.5) for all Round 2 runs