

## Round 2 results — Run run3 submitted from cuni

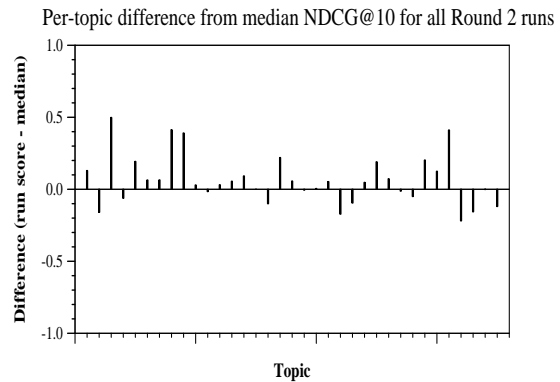
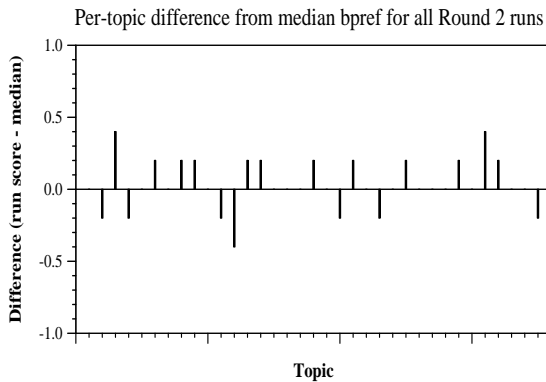
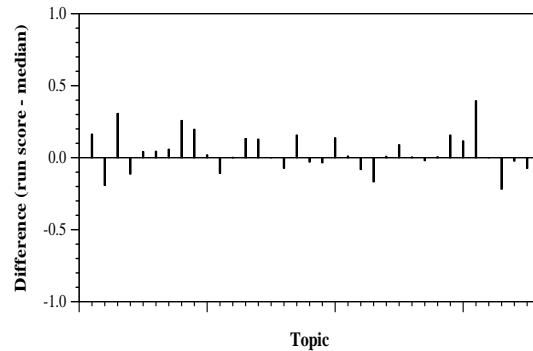
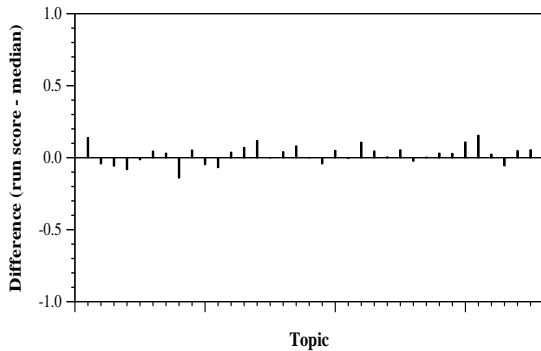
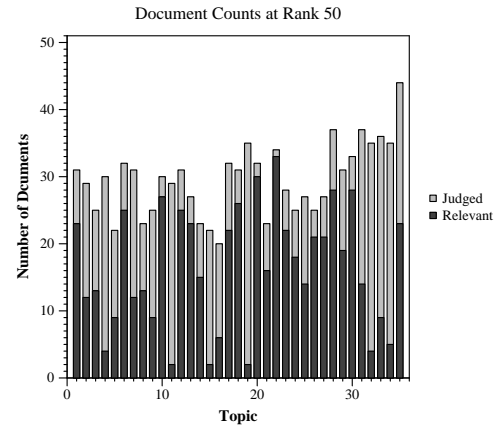
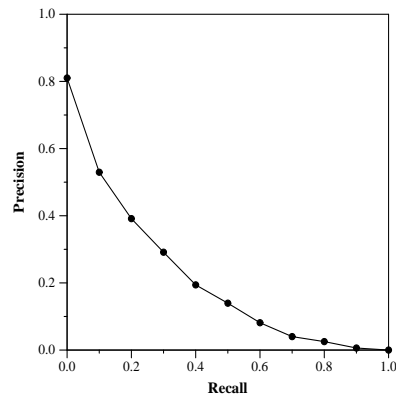
### Run Description

The queries in this run were automatically expanded using Kullback-Leibler Divergence approach (top 7 documents and top 2 terms) All other settings are similar to run1.

| Summary Statistics            |           |
|-------------------------------|-----------|
| Run ID                        | run3      |
| Topic type                    | automatic |
| Contributed to judgment sets? | no        |

| Overall measures         |                |
|--------------------------|----------------|
| Number of topics         | 35             |
| Total number retrieved   | 31575          |
| Total relevant           | 3002           |
| Total relevant retrieved | 1763           |
| MAP                      | 0.2037         |
| Mean Bpref               | 0.3919         |
| Mean NDCG@10             | 0.5092         |
| Mean RBP(p=0.5)          | 0.5951 +0.0020 |

| Document Level Averages |           |
|-------------------------|-----------|
|                         | Precision |
| At 5 docs               | 0.6343    |
| At 10 docs              | 0.5543    |
| At 15 docs              | 0.4952    |
| At 20 docs              | 0.4686    |
| At 30 docs              | 0.4114    |
| R-Precision             |           |
| Exact                   | 0.2589    |



Per-topic difference from median P@5 for all Round 2 runs

Per-topic difference from median RBP(p=0.5) for all Round 2 runs