

Round 2 results — Run run1 submitted from cuni

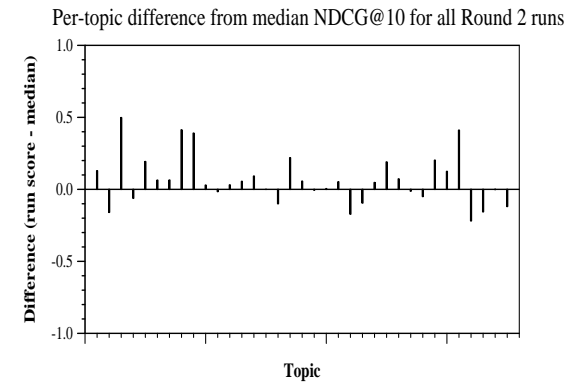
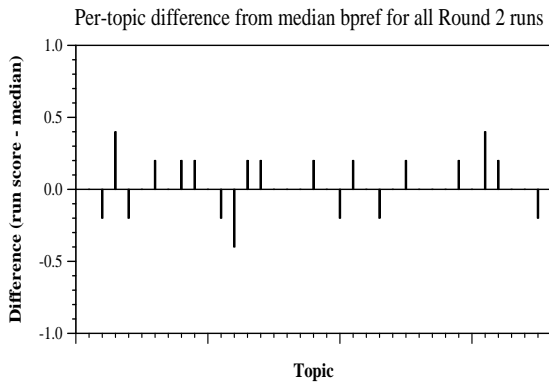
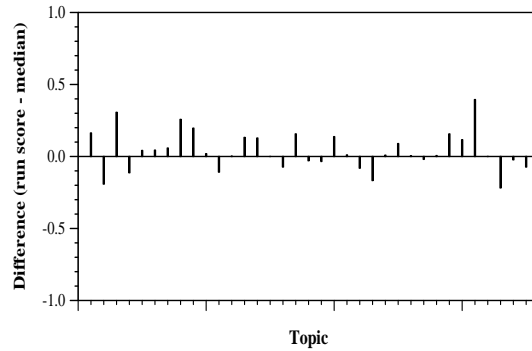
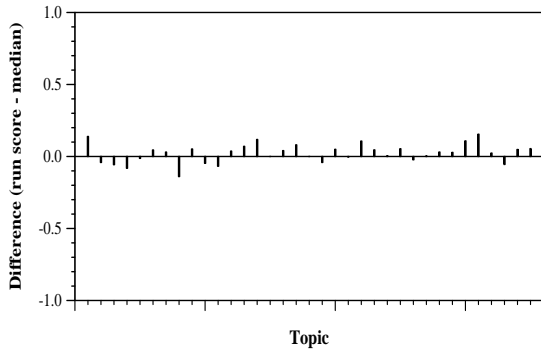
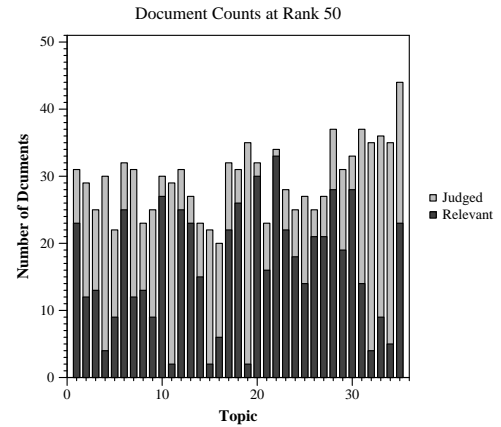
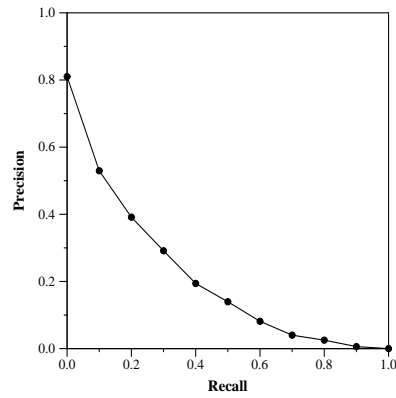
Run Description

Documents (abstracts and titles from metadata, full body text from json files) were indexed using Terrier. Queries were created using the query fields in the topic files. LGD weighting model was used to retrieve 1000 documents for each query.

Summary Statistics	
Run ID	run1
Topic type	automatic
Contributed to judgment sets?	yes

Overall measures	
Number of topics	35
Total number retrieved	31575
Total relevant	3002
Total relevant retrieved	1763
MAP	0.2037
Mean Bpref	0.3919
Mean NDCG@10	0.5092
Mean RBP(p=0.5)	0.5951 +0.0020

Document Level Averages	
	Precision
At 5 docs	0.6343
At 10 docs	0.5543
At 15 docs	0.4952
At 20 docs	0.4686
At 30 docs	0.4114
R-Precision	
Exact	0.2589



Per-topic difference from median P@5 for all Round 2 runs

Per-topic difference from median RBP(p=0.5) for all Round 2 runs