

Round 2 results — Run mpiid5_run1 submitted from mpiid5

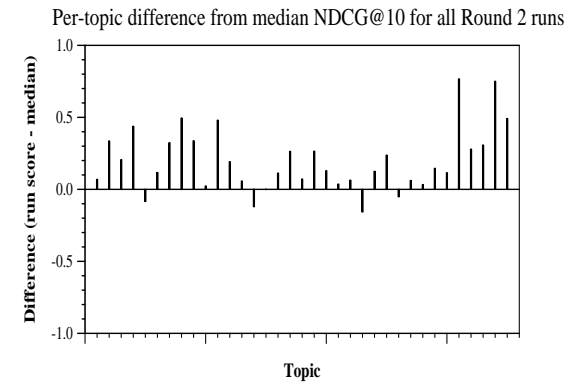
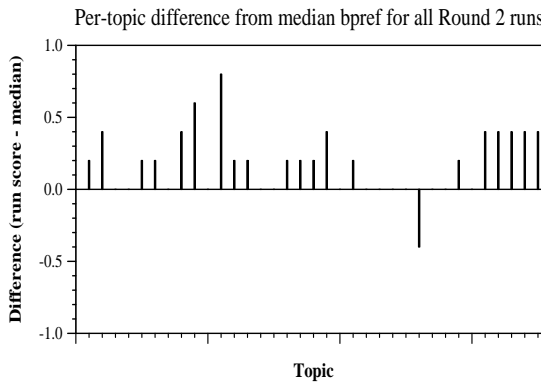
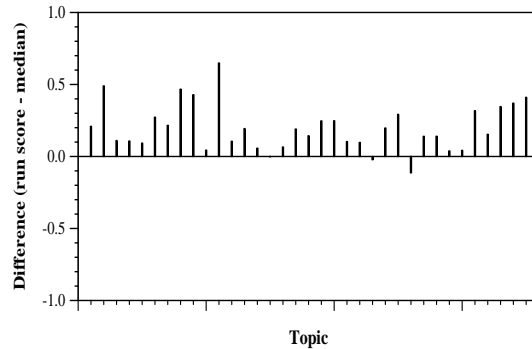
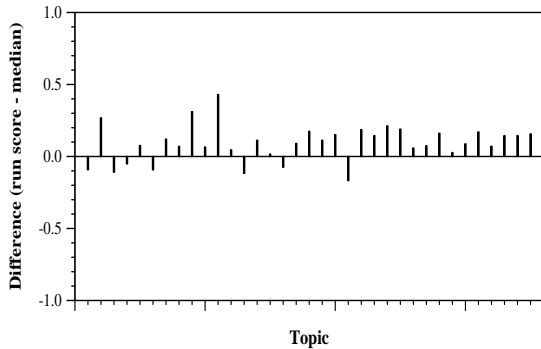
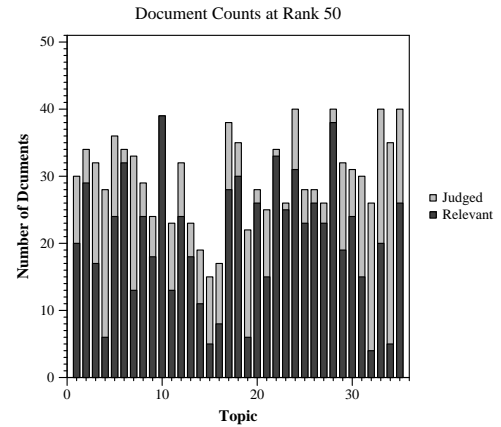
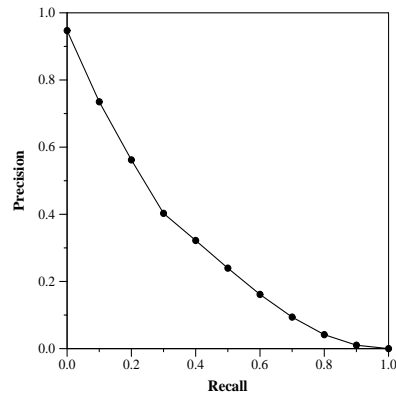
Run Description

We re-rank top-1500 documents returned by BM25 using query+question queries. For the re-ranking method, we use the ELECTRA-Base model fine-tuned on the MSMARCO passage dataset. The model is later fine-tuned on the TREC COVID round 1 full-text collection.

Summary Statistics	
Run ID	mpiid5_run1
Topic type	feedback
Contributed to judgment sets?	no

Overall measures	
Number of topics	35
Total number retrieved	35000
Total relevant	3002
Total relevant retrieved	1635
MAP	0.2946
Mean Bpref	0.4609
Mean NDCG@10	0.6677
Mean RBP(p=0.5)	0.7305 +0.0179

Document Level Averages	
	Precision
At 5 docs	0.7771
At 10 docs	0.7200
At 15 docs	0.6705
At 20 docs	0.5957
At 30 docs	0.5114
R-Precision	
Exact	0.3408



Per-topic difference from median P@5 for all Round 2 runs

Per-topic difference from median RBP(p=0.5) for all Round 2 runs