

**Round 2 results — Run ir\_covid19\_cle\_BM25 submitted from IR\_COVID19\_CLE**

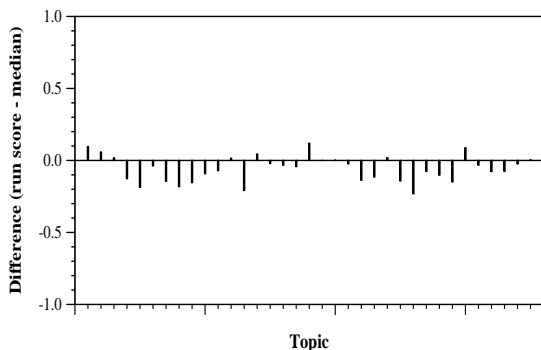
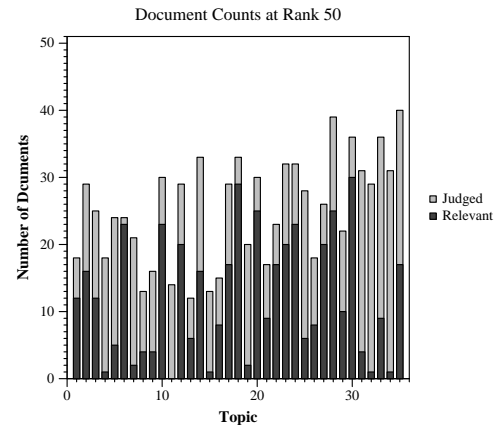
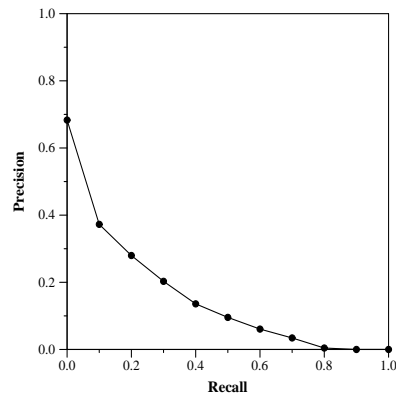
**Run Description**

We have used the data set with all the documents from corpus. Using the metadata available, we added cord\_id. We used around 48000 files. We used "Paper\_id", "Title Id" and "Abstract" and "body\_text" to index all the documents using Apache Lucene. We have indexed every document for all tokens present with in the document. However, in a collection of documents these tokens can be repeating in multiple documents as well. Here, we use inverted index to store tokens repeating in multiple indexes, so that when searched for a specific token, we can narrow down the search documents specifically all documents that token is present. We have used the query of the topic for querying the index. We parsed the query with English Analyzer and searched on the abstract text field of the index. For each query, We have retrieved the Top 1000 documents and the relevance scores using BM25 similarity which is a ranking model used by search engines based on probabilistic weighting schemes. BM25 model approximates conditioned 2-poisson model. BM25 is a TF/IDF based similarity. Reference Paper: Robertson, S. E., Walker, S., Hancock-Beaulieu, M., & Gatford, M. (1994). Okapi at TREC-3. In Proceedings of the Third Text REtrieval Conference (TREC 1994). Gaithersburg

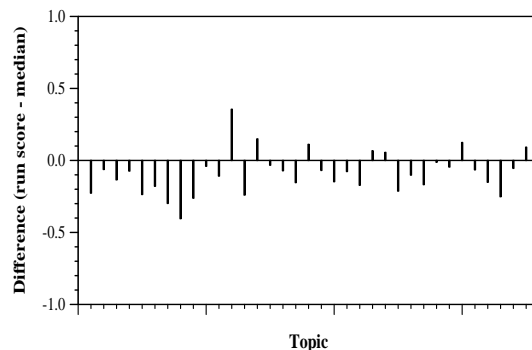
Summary Statistics	
Run ID	ir_covid19_cle_BM25
Topic type	feedback
Contributed to judgment sets?	no

Overall measures	
Number of topics	35
Total number retrieved	30975
Total relevant	3002
Total relevant retrieved	1430
MAP	0.1450
Mean Bpref	0.3124
Mean NDCG@10	0.3834
Mean RBP(p=0.5)	0.4526 +0.0778

Document Level Averages	
	Precision
At 5 docs	0.5029
At 10 docs	0.4229
At 15 docs	0.3714
At 20 docs	0.3314
At 30 docs	0.2933
R-Precision	
Exact	0.2013



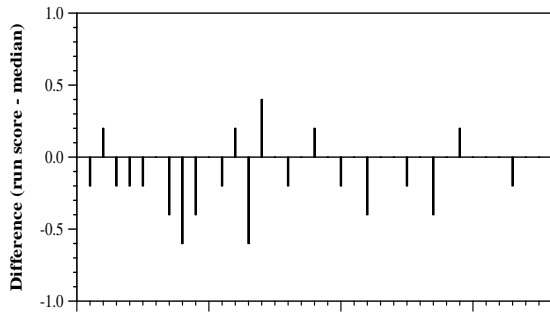
Per-topic difference from median bpref for all Round 2 runs



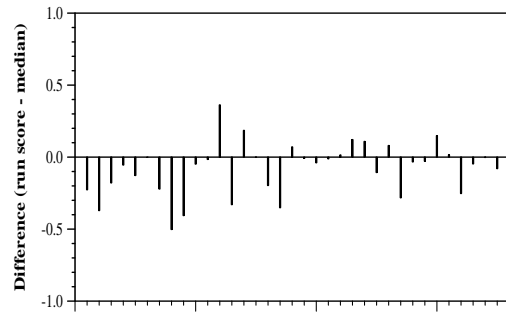
Per-topic difference from median NDCG@10 for all Round 2 runs

Round 2 results — Run ir\_covid19\_cle\_BM25 submitted from IR\_COVID19\_CLE

---



Per-topic difference from median P@5 for all Round 2 runs



Per-topic difference from median RBP(p=0.5) for all Round 2 runs