

## Round 2 results — Run VTechPRF submitted from VirginiaTechHAT

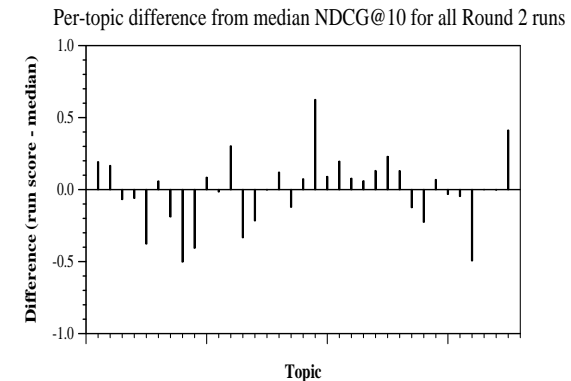
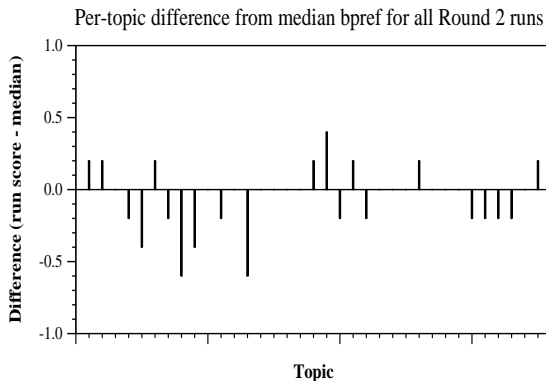
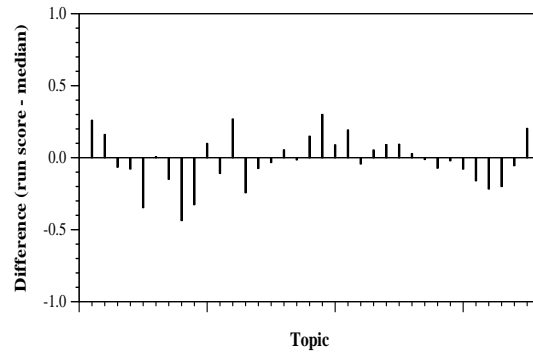
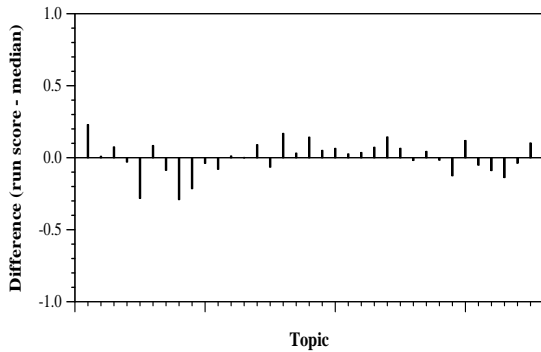
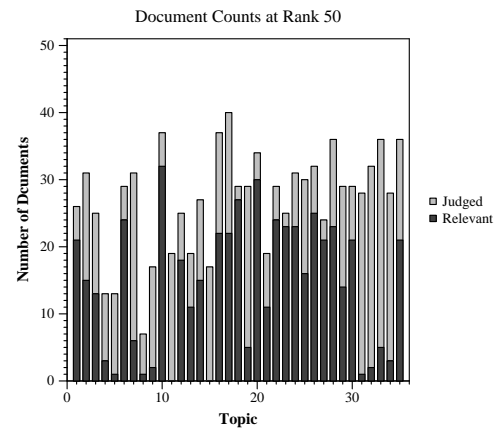
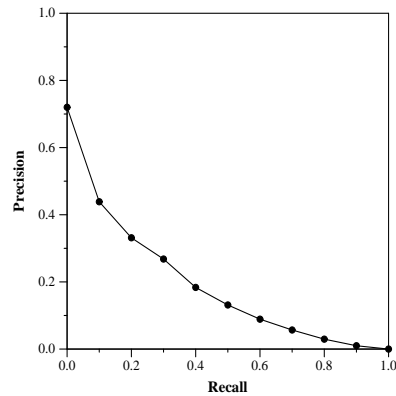
### Run Description

well-tuned RM3 based on R1 data; topfbdoc=20, fbterm=50, worg\_query=0.2, mufb=0, mudoc=500

Summary Statistics	
Run ID	VTechPRF
Topic type	feedback
Contributed to judgment sets?	no

Overall measures	
Number of topics	35
Total number retrieved	32006
Total relevant	3002
Total relevant retrieved	1705
MAP	0.1856
Mean Bpref	0.3703
Mean NDCG@10	0.4524
Mean RBP(p=0.5)	0.5274 +0.1030

Document Level Averages	
	Precision
At 5 docs	0.5429
At 10 docs	0.4914
At 15 docs	0.4457
At 20 docs	0.3929
At 30 docs	0.3476
R-Precision	
Exact	0.2288



Per-topic difference from median P@5 for all Round 2 runs

Per-topic difference from median RBP(p=0.5) for all Round 2 runs