

Round 2 results — Run SparseDenseSciBert submitted from CMT

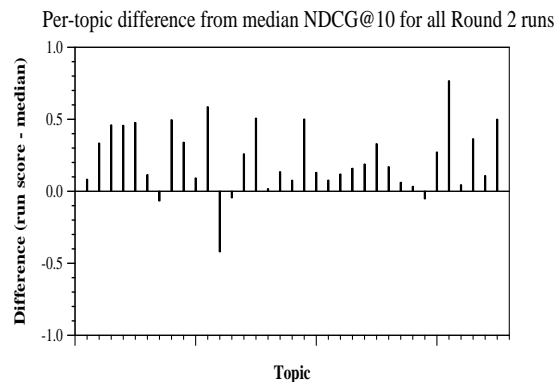
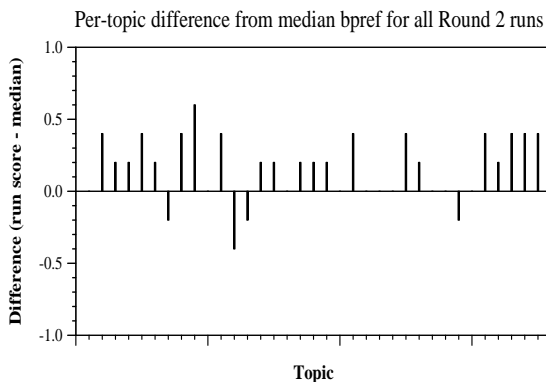
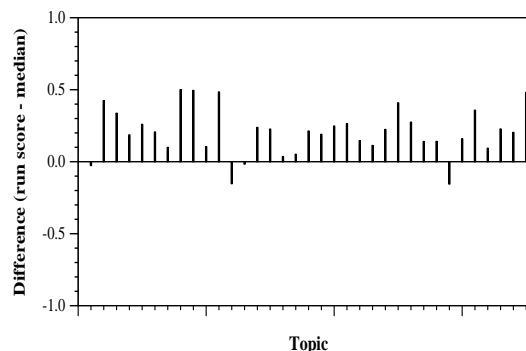
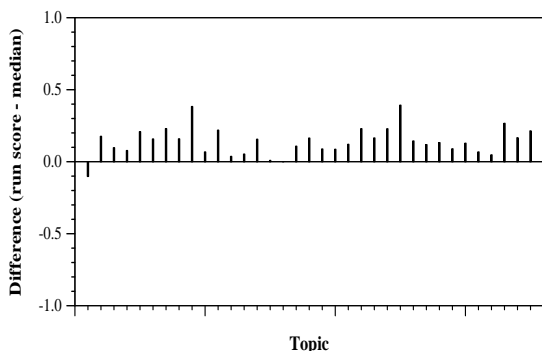
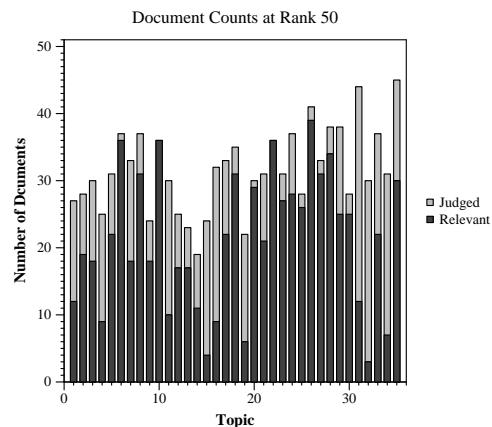
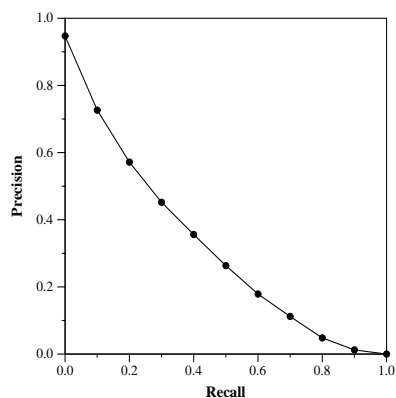
Run Description

bm25+ann+scibert.0.33.teIn (ann-bm25 retrieval + scibert reranker): anserini TREC-COVID R2 Retrieval #8 + med-marco ANN + med-marco SciBERT with COVID Mask-Lm fine-tuning

Summary Statistics	
Run ID	SparseDenseSciBert
Topic type	feedback
Contributed to judgment sets?	yes

Overall measures	
Number of topics	35
Total number retrieved	35000
Total relevant	3002
Total relevant retrieved	2048
MAP	0.3115
Mean Bpref	0.5096
Mean NDCG@10	0.6772
Mean RBP(p=0.5)	0.7520 +0.0011

Document Level Averages	
	Precision
At 5 docs	0.7600
At 10 docs	0.6943
At 15 docs	0.6590
At 20 docs	0.6086
At 30 docs	0.5400
R-Precision	
Exact	0.3478



Per-topic difference from median P@5 for all Round 2 runs

Per-topic difference from median RBP(p=0.5) for all Round 2 runs