

## Round 2 results — Run SFDC-round2-qna submitted from SFDC

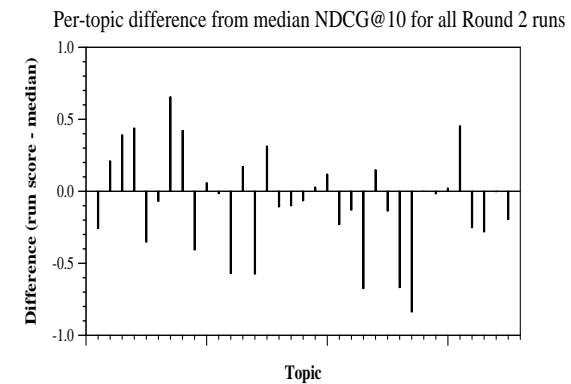
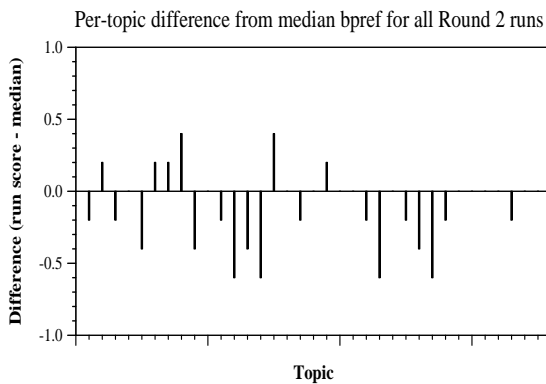
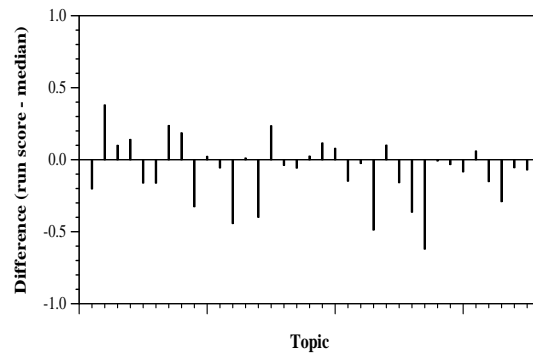
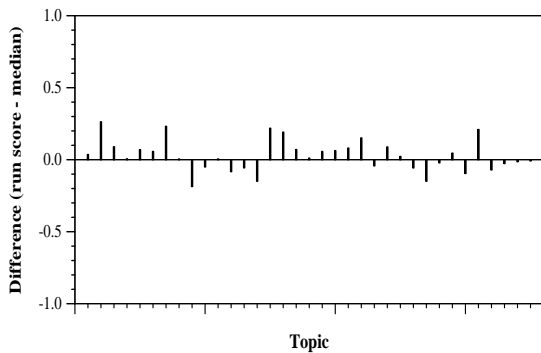
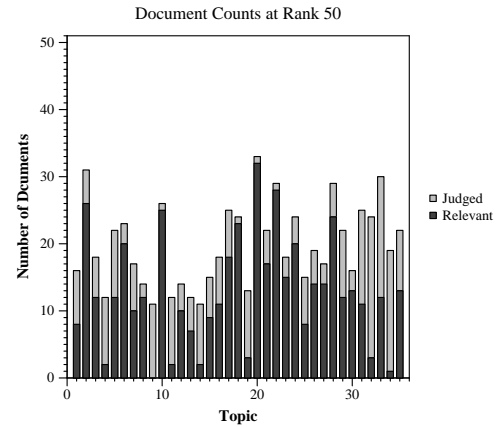
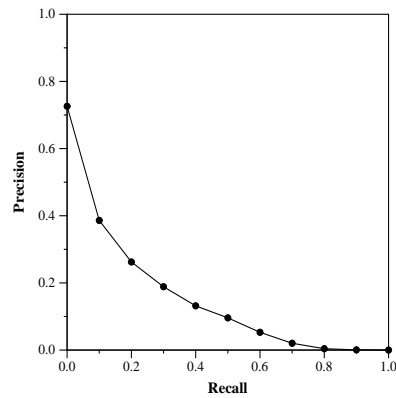
### Run Description

Semantic Search retrieval with BERT. Uses a question-answering module to do a final ranking on the top 100 documents.

Summary Statistics	
Run ID	SFDC-round2-qna
Topic type	automatic
Contributed to judgment sets?	no

Overall measures	
Number of topics	35
Total number retrieved	35000
Total relevant	3002
Total relevant retrieved	1594
MAP	0.1420
Mean Bpref	0.3978
Mean NDCG@10	0.3963
Mean RBP(p=0.5)	0.4611 +0.3200

Document Level Averages	
	Precision
At 5 docs	0.4857
At 10 docs	0.4171
At 15 docs	0.3867
At 20 docs	0.3571
At 30 docs	0.3133
R-Precision	
Exact	0.2008



Per-topic difference from median P@5 for all Round 2 runs

Per-topic difference from median RBP(p=0.5) for all Round 2 runs