

Round 2 results — Run SFDC-round2-baseline submitted from SFDC

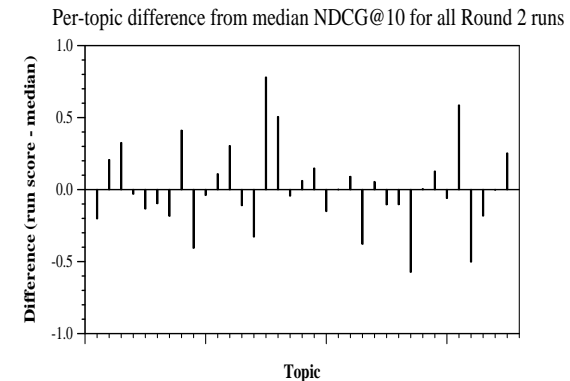
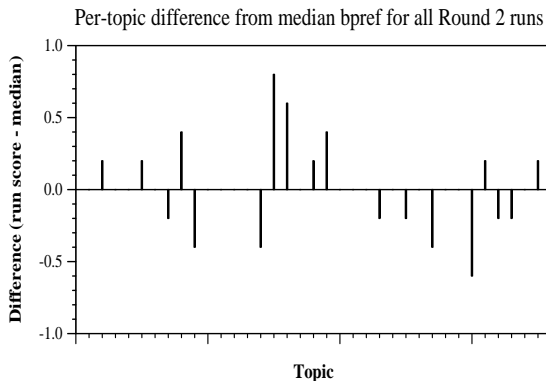
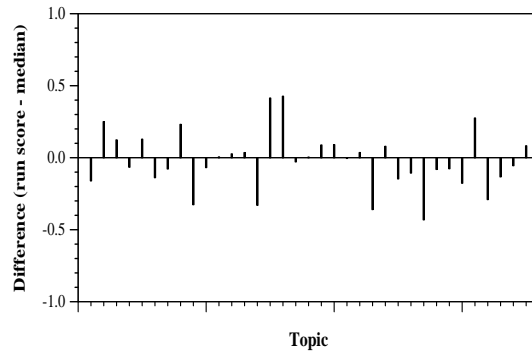
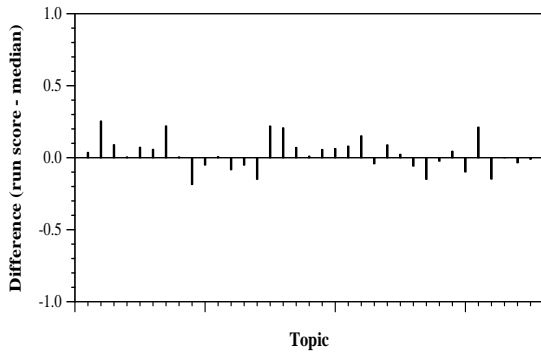
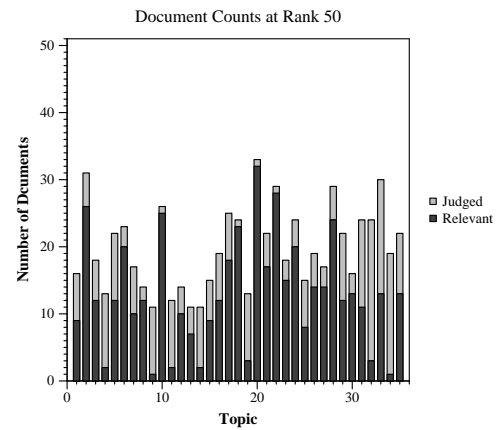
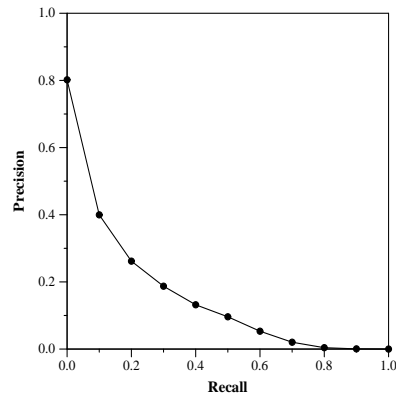
Run Description

Semantic search retriever (no TF-IDF features) with BERT.

Summary Statistics	
Run ID	SFDC-round2-baseline
Topic type	automatic
Contributed to judgment sets?	yes

Overall measures	
Number of topics	35
Total number retrieved	35000
Total relevant	3002
Total relevant retrieved	1597
MAP	0.1469
Mean Bpref	0.3956
Mean NDCG@10	0.4503
Mean RBP(p=0.5)	0.5426 +0.0049

Document Level Averages	
	Precision
At 5 docs	0.6114
At 10 docs	0.4714
At 15 docs	0.3981
At 20 docs	0.3586
At 30 docs	0.3152
R-Precision	
Exact	0.2014



Per-topic difference from median P@5 for all Round 2 runs

Per-topic difference from median RBP(p=0.5) for all Round 2 runs