

Round 2 results — Run FullTxt\_R2\_Orig submitted from OHSU

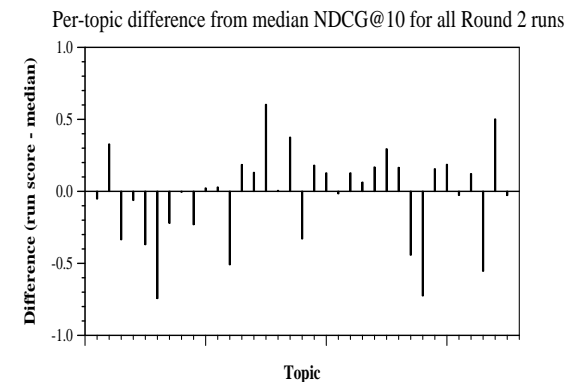
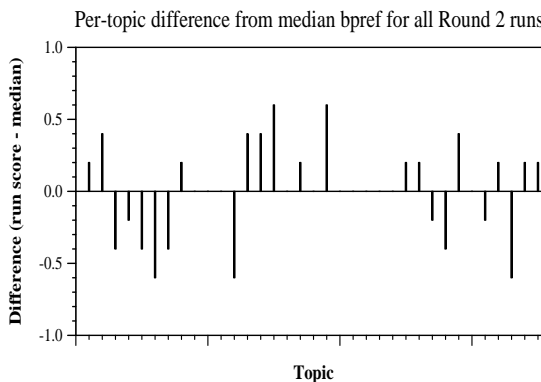
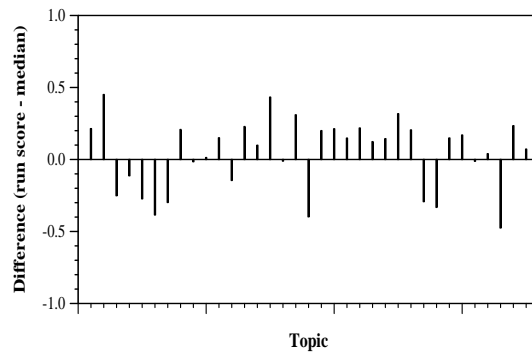
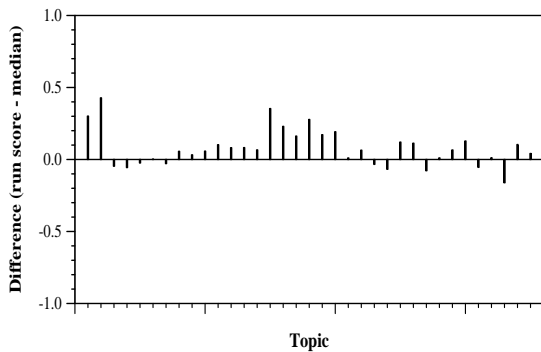
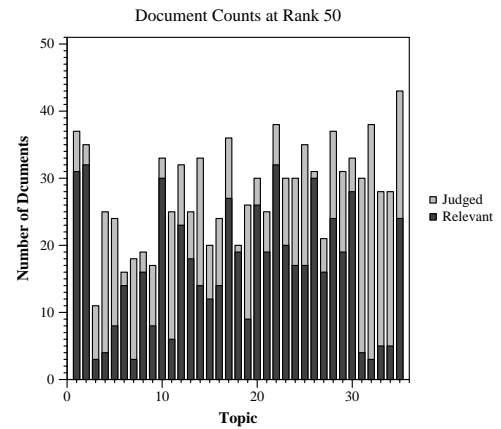
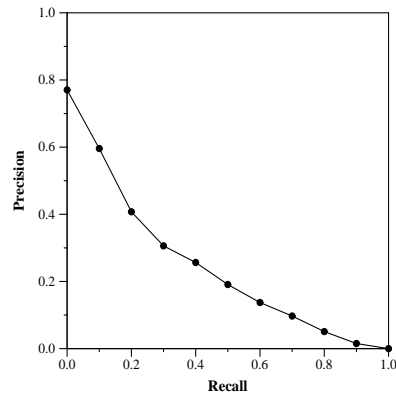
Run Description

Queries, questions, and narratives were tokenized to form a query for each topic. Additional manual review was performed for identification of relevant query terms. These queries were inputted into a Lucene full-text index was searched using Pyserini using BM25, LDA, and RM3 reranking to identify the top 1000 documents.

Summary Statistics	
Run ID	FullTxt_R2_Orig
Topic type	manual
Contributed to judgment sets?	no

Overall measures	
Number of topics	35
Total number retrieved	35000
Total relevant	3002
Total relevant retrieved	1991
MAP	0.2373
Mean Bpref	0.4479
Mean NDCG@10	0.5103
Mean RBP(p=0.5)	0.5079 +0.1090

Document Level Averages	
	Precision
At 5 docs	0.6114
At 10 docs	0.5914
At 15 docs	0.5371
At 20 docs	0.4886
At 30 docs	0.4152
R-Precision	
Exact	0.2748



Per-topic difference from median P@5 for all Round 2 runs

Per-topic difference from median RBP(p=0.5) for all Round 2 runs