

Round 2 results — Run ES_Covid_ML submitted from whitej_relevance

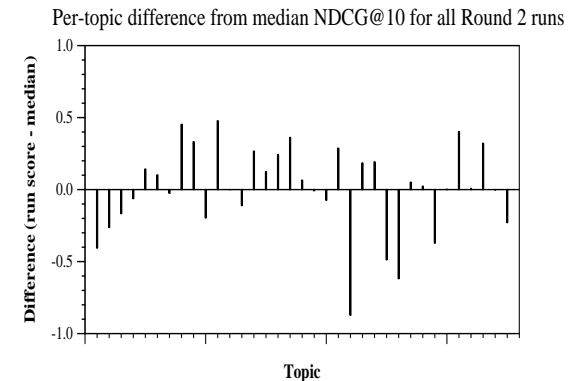
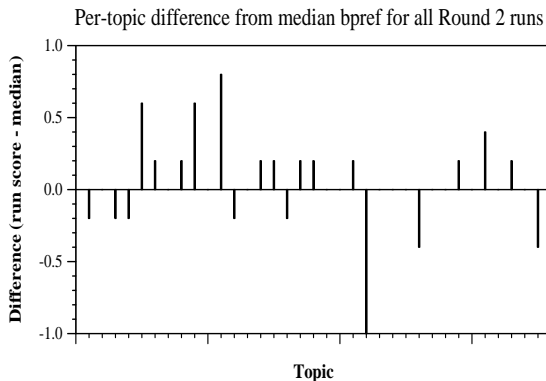
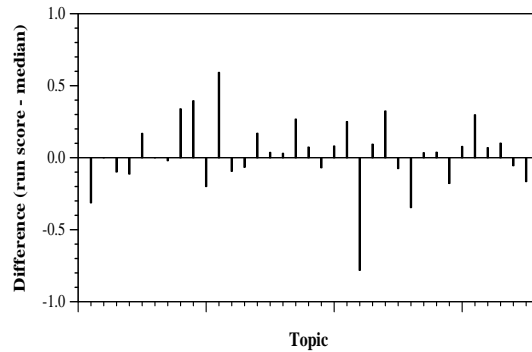
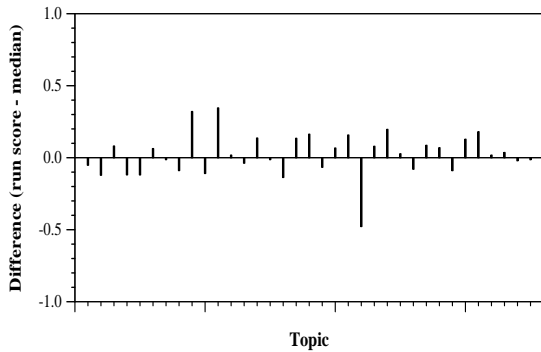
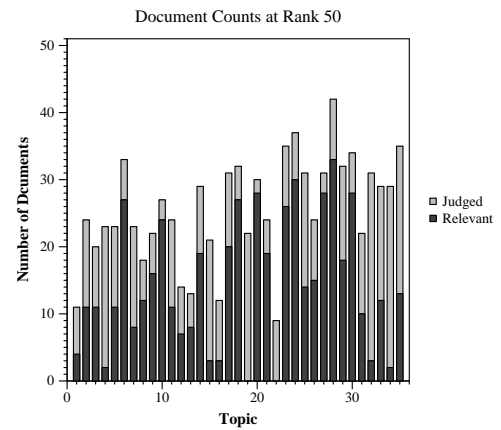
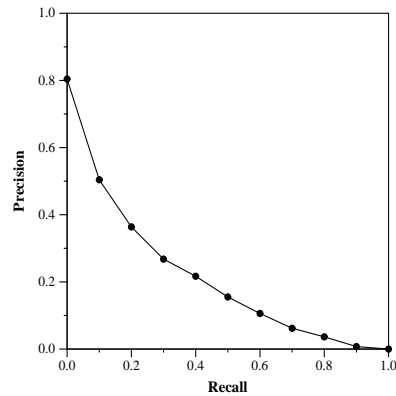
Run Description

Covid search with ML

| Summary Statistics | |
|-------------------------------|-------------|
| Run ID | ES_Covid_ML |
| Topic type | automatic |
| Contributed to judgment sets? | yes |

| Overall measures | |
|--------------------------|----------------|
| Number of topics | 35 |
| Total number retrieved | 31928 |
| Total relevant | 3002 |
| Total relevant retrieved | 1602 |
| MAP | 0.2043 |
| Mean Bpref | 0.3916 |
| Mean NDCG@10 | 0.4967 |
| Mean RBP(p=0.5) | 0.5372 +0.0031 |

| Document Level Averages | |
|-------------------------|-----------|
| | Precision |
| At 5 docs | 0.6400 |
| At 10 docs | 0.5457 |
| At 15 docs | 0.4648 |
| At 20 docs | 0.4200 |
| At 30 docs | 0.3600 |
| R-Precision | |
| Exact | 0.2585 |



Per-topic difference from median P@5 for all Round 2 runs

Per-topic difference from median RBP(p=0.5) for all Round 2 runs