

Round 1 results — Run udel_fang_run3 submitted from udel_fang

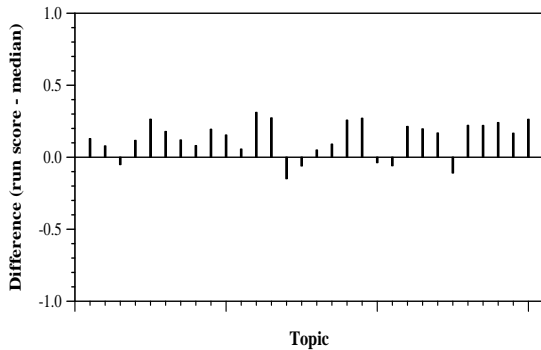
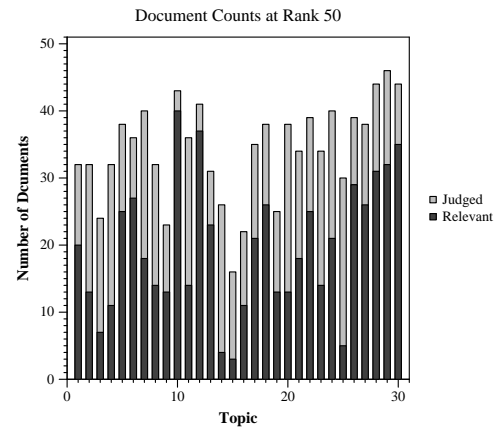
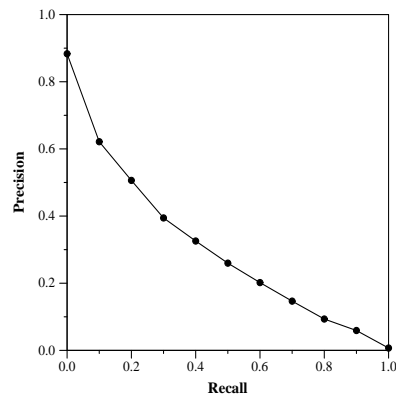
Run Description

We build two indices: one with only title and abstract and the other with the combination of all paragraphs. We use all non-stop words from query and question fields as queries. F2EXP is used as the retrieval function and we also apply the axiomatic approach to select semantically related terms for query expansion. CombSUM is used to merge the results using these indices.

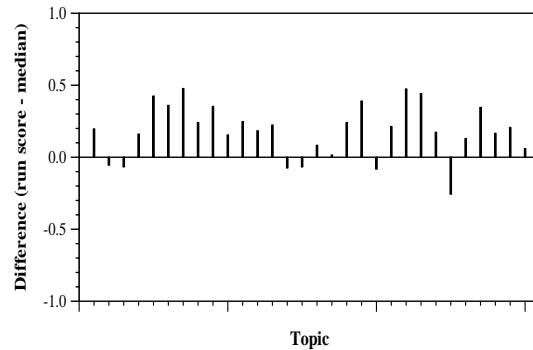
Summary Statistics	
Run ID	udel_fang_run3
Topic type	automatic
Contributed to judgment sets?	no

Overall measures	
Number of topics	30
Total number retrieved	30000
Total relevant	2352
Total relevant retrieved	1768
MAP	0.2973
Mean Bpref	0.4538
Mean NDCG@10	0.5370

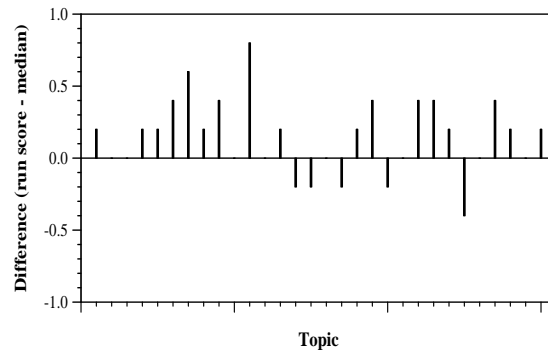
Document Level Averages	
	Precision
At 5 docs	0.6333
At 10 docs	0.6000
At 15 docs	0.5467
At 20 docs	0.5283
At 30 docs	0.4789
R-Precision	
Exact	0.3394



Per-topic difference from median bpref for all Round 1 runs



Per-topic difference from median NDCG@10 for all Round 1 runs



Per-topic difference from median P@5 for all Round 1 runs