

Round 1 results — Run udel_fang_run2 submitted from udel_fang

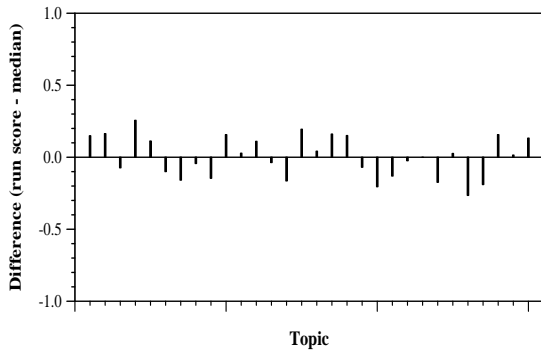
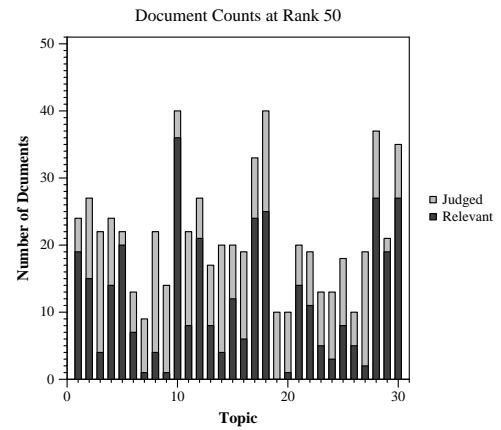
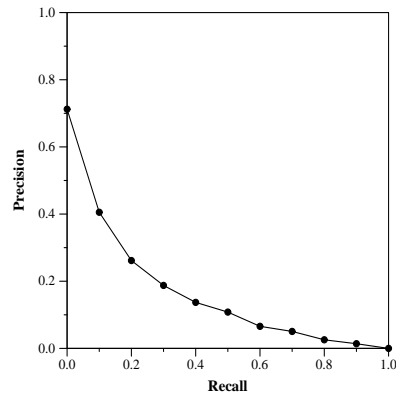
Run Description

We build two indices: one with only title and abstract and the other with the combination of all paragraphs. Narrative fields minus stopwords are used as queries. F2EXP is used as the retrieval function. CombSUM is used to merge the results using these indices. Top 10 results are re-ranked in descending order of the year they published in and the ties are broken by the scores from the previous step.

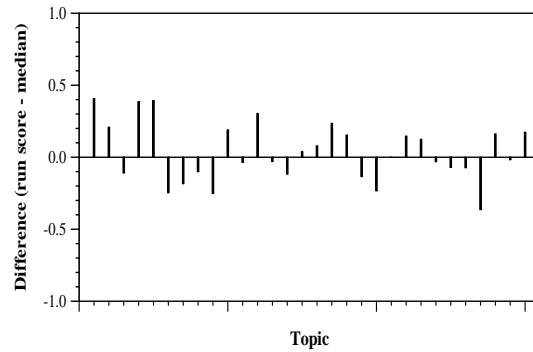
Summary Statistics	
Run ID	udel_fang_run2
Topic type	automatic
Contributed to judgment sets?	yes

Overall measures	
Number of topics	30
Total number retrieved	30000
Total relevant	2352
Total relevant retrieved	1150
MAP	0.1540
Mean Bpref	0.3281
Mean NDCG@10	0.3920

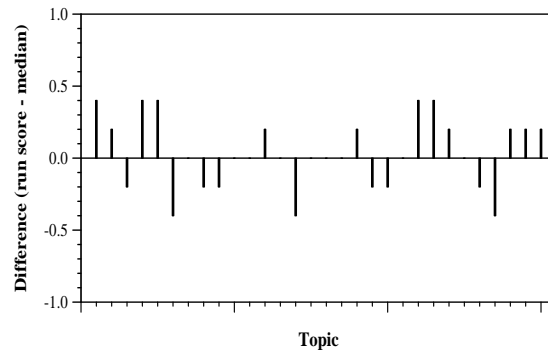
Document Level Averages	
	Precision
At 5 docs	0.5200
At 10 docs	0.4233
At 15 docs	0.3556
At 20 docs	0.3367
At 30 docs	0.2944
R-Precision	
Exact	0.1968



Per-topic difference from median bpref for all Round 1 runs



Per-topic difference from median NDCG@10 for all Round 1 runs



Per-topic difference from median P@5 for all Round 1 runs