

Round 1 results — Run tm_lda400 submitted from TM_IR_HITZ

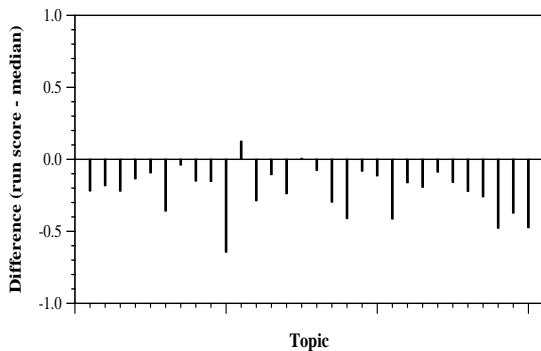
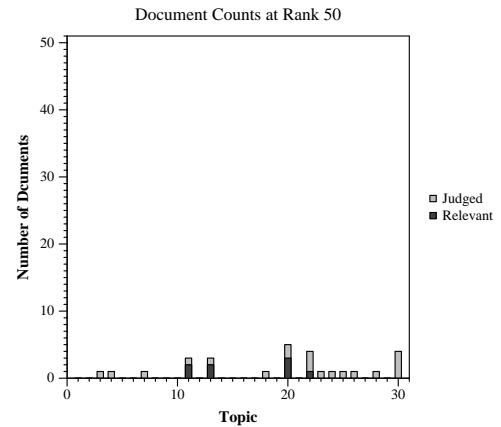
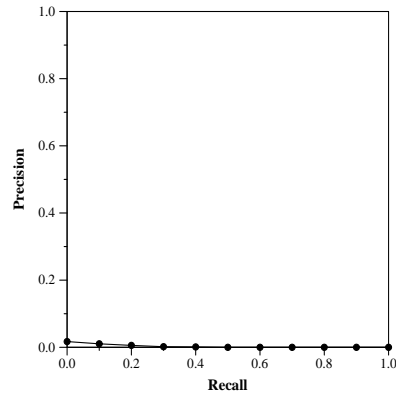
Run Description

The system models the whole corpus with LDA based topic model. We used only abstracts of the articles to fit 400 topics. We retrieve the documents by first obtaining the topic distribution of the question and narrative, and rank the papers in the corpus according to Jensen-Shannon divergence.

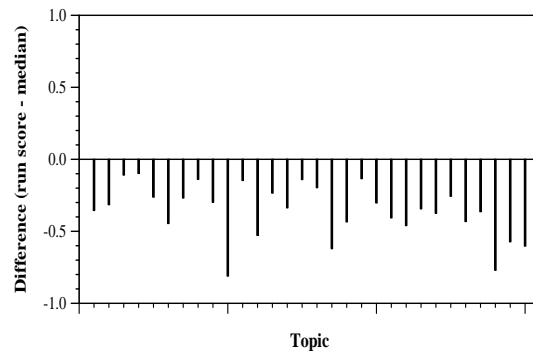
Summary Statistics	
Run ID	tm_lda400
Topic type	automatic
Contributed to judgment sets?	no

Overall measures	
Number of topics	30
Total number retrieved	30000
Total relevant	2352
Total relevant retrieved	281
MAP	0.0021
Mean Bpref	0.1090
Mean NDCG@10	0.0000

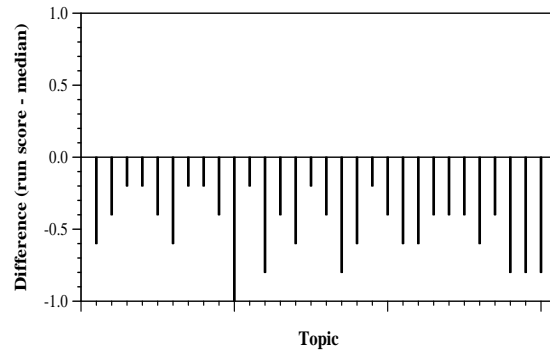
Document Level Averages	
	Precision
At 5 docs	0.0000
At 10 docs	0.0000
At 15 docs	0.0000
At 20 docs	0.0000
At 30 docs	0.0044
R-Precision	
Exact	0.0047



Per-topic difference from median bpref for all Round 1 runs



Per-topic difference from median NDCG@10 for all Round 1 runs



Per-topic difference from median P@5 for all Round 1 runs