

Round 1 results — Run sab20.1.blind submitted from sabir

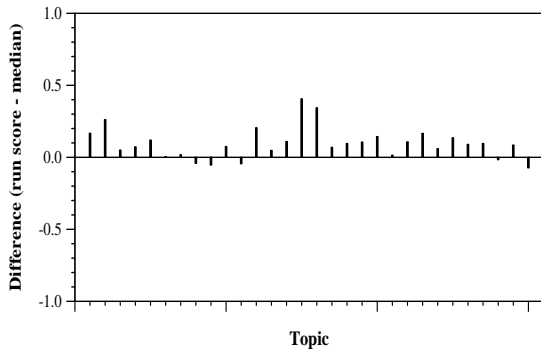
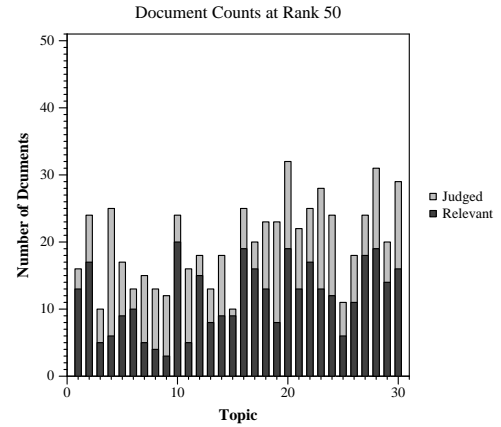
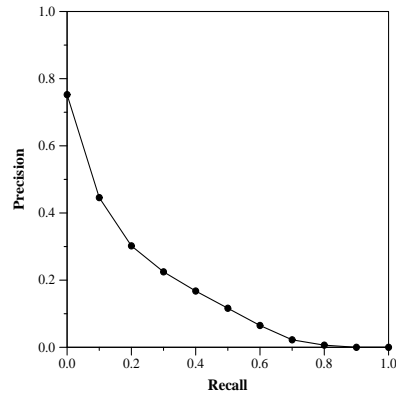
Run Description

Blind (pseudo) feedback run SMART vector run, Lnu docs and ltu queries. Run on JSON docs only. Initial run to find top 10 docs, consider them relevant and run Rocchio feedback, expanding topic to top 20 terms Initial full topics including narrative.

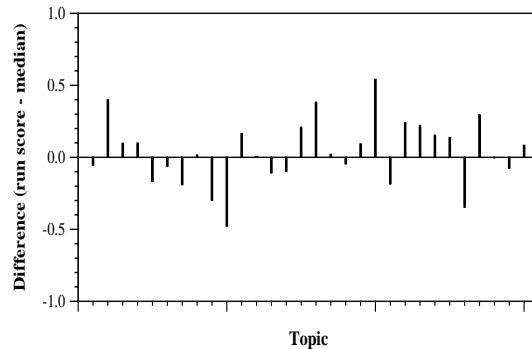
Summary Statistics	
Run ID	sab20.1.blind
Topic type	automatic
Contributed to judgment sets?	no

Overall measures	
Number of topics	30
Total number retrieved	30000
Total relevant	2352
Total relevant retrieved	1413
MAP	0.1659
Mean Bpref	0.4194
Mean NDCG@10	0.3933

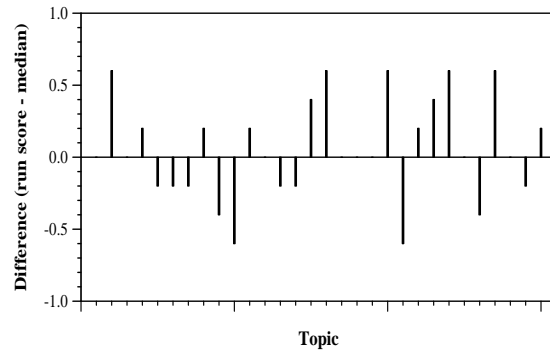
Document Level Averages	
	Precision
At 5 docs	0.5400
At 10 docs	0.4467
At 15 docs	0.3800
At 20 docs	0.3517
At 30 docs	0.2900
R-Precision	
Exact	0.2159



Per-topic difference from median bpref for all Round 1 runs



Per-topic difference from median NDCG@10 for all Round 1 runs



Per-topic difference from median P@5 for all Round 1 runs