

## Round 1 results — Run jlbase submitted from julielab

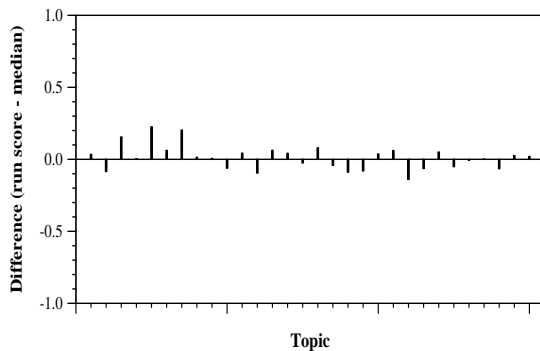
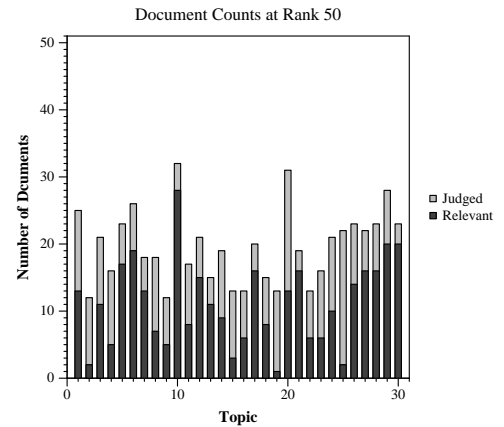
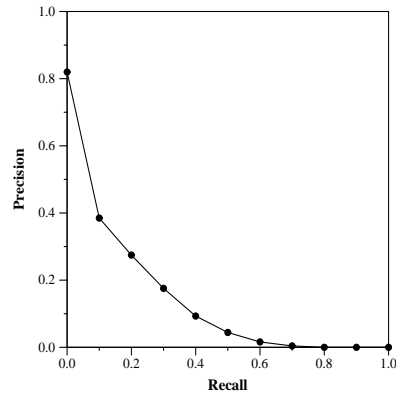
### Run Description

Indexing of text contents into Elasticsearch 7.0.1 with default settings. Searching: Mandatory disjunctive clause for topic "query" field. Mandatory dismax clause for "COVID19, COVID-19, SARS-CoV-2, SARS-CoV2, 2019-nCoV"

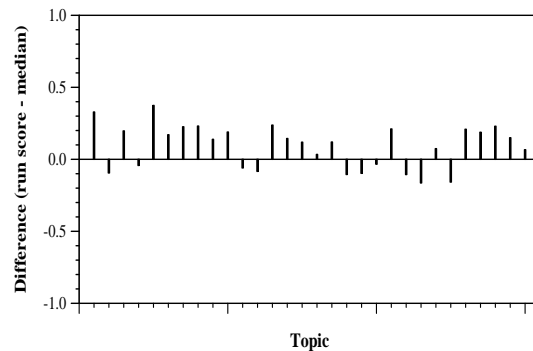
| Summary Statistics            |        |
|-------------------------------|--------|
| Run ID                        | jlbase |
| Topic type                    | manual |
| Contributed to judgment sets? | yes    |

| Overall measures         |        |
|--------------------------|--------|
| Number of topics         | 30     |
| Total number retrieved   | 30000  |
| Total relevant           | 2352   |
| Total relevant retrieved | 1112   |
| MAP                      | 0.1322 |
| Mean Bpref               | 0.3362 |
| Mean NDCG@10             | 0.4483 |

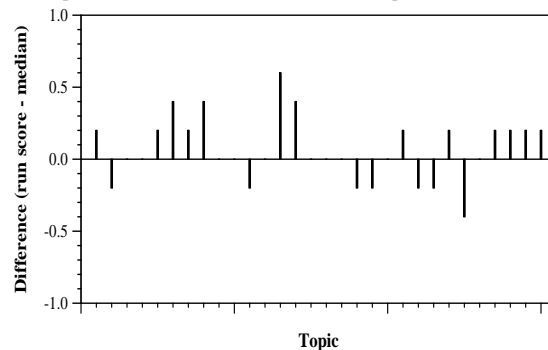
| Document Level Averages |           |
|-------------------------|-----------|
|                         | Precision |
| At 5 docs               | 0.5533    |
| At 10 docs              | 0.4633    |
| At 15 docs              | 0.3956    |
| At 20 docs              | 0.3450    |
| At 30 docs              | 0.2911    |
| R-Precision             |           |
| Exact                   | 0.1908    |



Per-topic difference from median bpref for all Round 1 runs



Per-topic difference from median NDCG@10 for all Round 1 runs



Per-topic difference from median P@5 for all Round 1 runs