

## Round 1 results — Run elhuyar\_indri submitted from Elhuyar\_NLP\_team

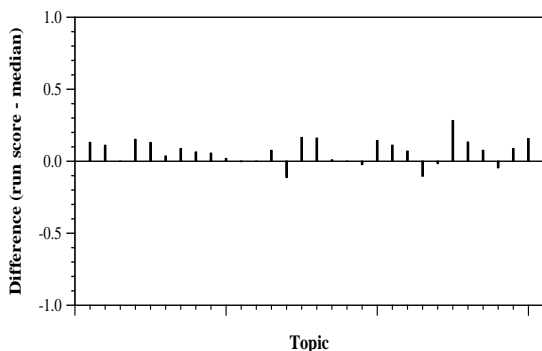
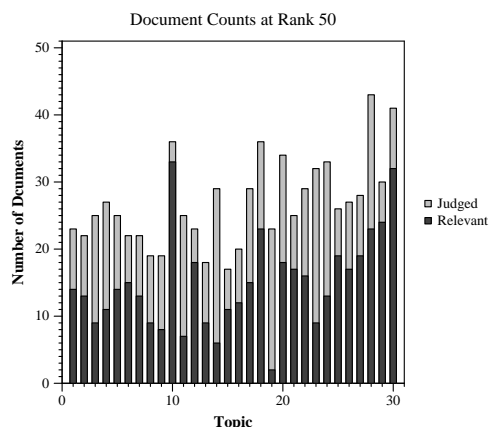
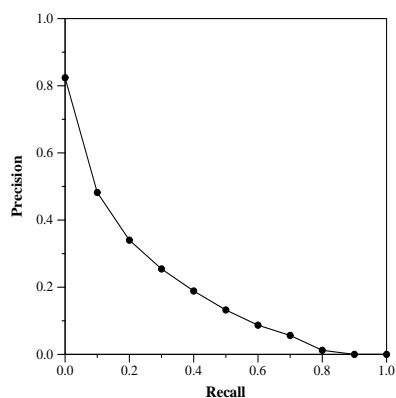
### Run Description

We tackle this document retrieval task as a passage retrieval task. Our system returns docids of their best scored passages. For ranking of relevant passages of the collection corresponding to the queries, we use a language modeling based information retrieval approach (Ponte & Croft, 1998). For that purpose, we used the Indri search engine (Strohman, 2005), which combines Bayesian networks with language models.

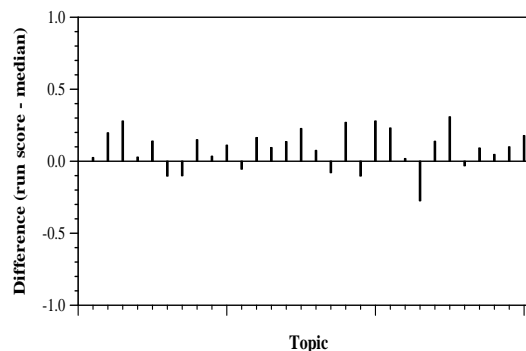
Summary Statistics	
Run ID	elhuyar_indri
Topic type	automatic
Contributed to judgment sets?	no

Overall measures	
Number of topics	30
Total number retrieved	29999
Total relevant	2352
Total relevant retrieved	1309
MAP	0.1867
Mean Bpref	0.3906
Mean NDCG@10	0.4442

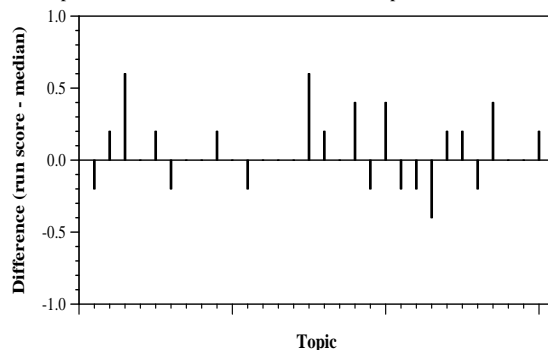
Document Level Averages	
	Precision
At 5 docs	0.5533
At 10 docs	0.4967
At 15 docs	0.4489
At 20 docs	0.4017
At 30 docs	0.3556
R-Precision	
Exact	0.2522



Per-topic difference from median bpref for all Round 1 runs



Per-topic difference from median NDCG@10 for all Round 1 runs



Per-topic difference from median P@5 for all Round 1 runs