

Round 1 results — Run UIowaS_Run2 submitted from UIowaS

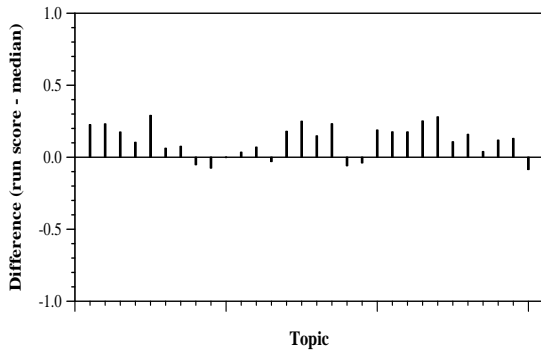
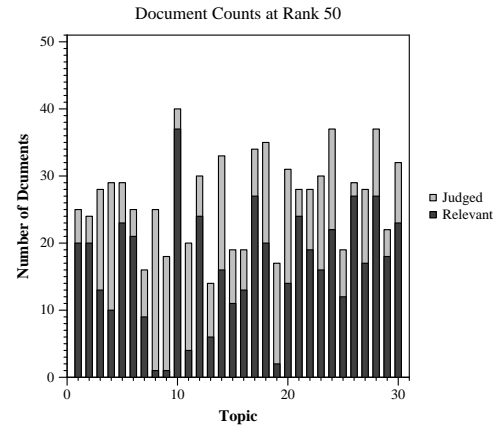
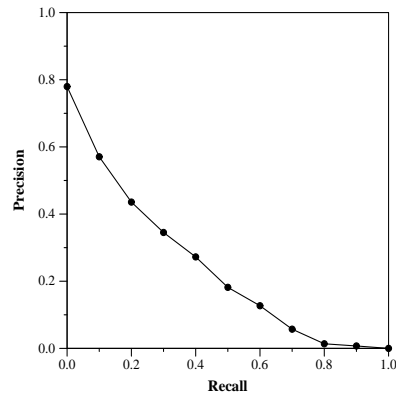
Run Description

The dataset was reduced to those that had at least one occurrence of the following patterns: covid, Covid, corona, Corona, cov, CoV, CORONA, COVID, SARS, COV Also we limited the topic to the query and narrative fields ignoring the question field. We used Terrier as the retrieval system. All runs are 'automatic'. BM25: default BM 25 model: $c = 0.4$

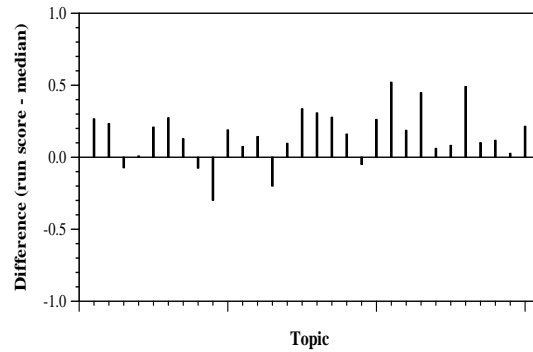
Summary Statistics	
Run ID	UIowaS_Run2
Topic type	automatic
Contributed to judgment sets?	no

Overall measures	
Number of topics	30
Total number retrieved	30000
Total relevant	2352
Total relevant retrieved	1377
MAP	0.2310
Mean Bpref	0.4376
Mean NDCG@10	0.5089

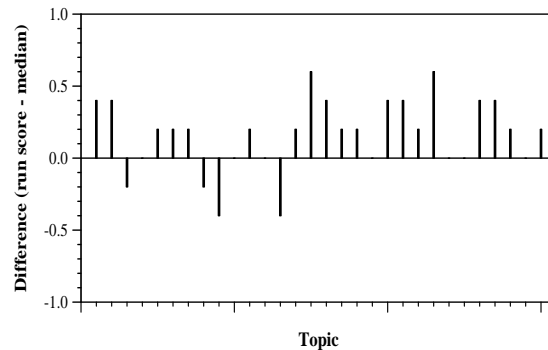
Document Level Averages	
	Precision
At 5 docs	0.6467
At 10 docs	0.5600
At 15 docs	0.5022
At 20 docs	0.4683
At 30 docs	0.3989
R-Precision	
Exact	0.2991



Per-topic difference from median bpref for all Round 1 runs



Per-topic difference from median NDCG@10 for all Round 1 runs



Per-topic difference from median P@5 for all Round 1 runs