

Round 1 results — Run SinequaR1_1 submitted from Sinequa

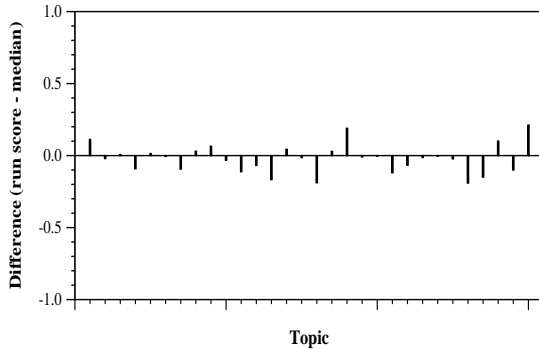
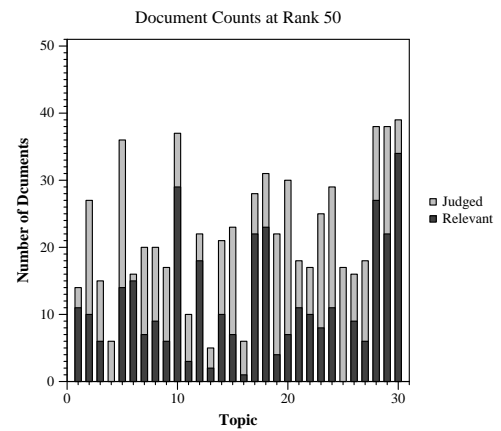
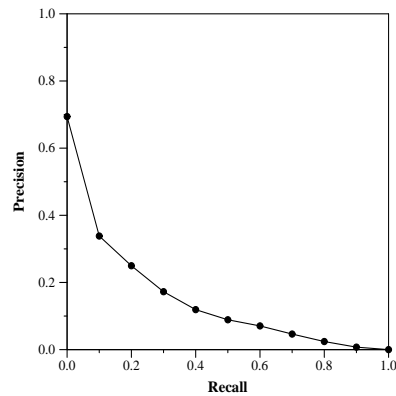
Run Description

Results have been generated using Sinequa search engine relevance computation. We used our baseline computation, that is the default settings, with no additional fine tuning nor query expansion/enrichments.

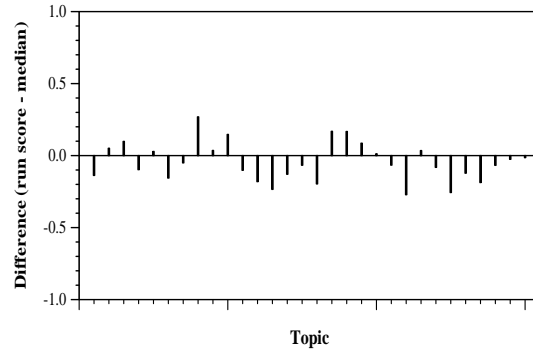
Summary Statistics	
Run ID	SinequaR1_1
Topic type	automatic
Contributed to judgment sets?	no

Overall measures	
Number of topics	30
Total number retrieved	23926
Total relevant	2352
Total relevant retrieved	994
MAP	0.1339
Mean Bpref	0.3033
Mean NDCG@10	0.3137

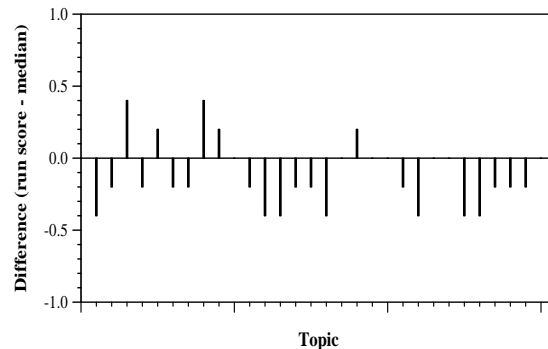
Document Level Averages	
	Precision
At 5 docs	0.3667
At 10 docs	0.3633
At 15 docs	0.3444
At 20 docs	0.3100
At 30 docs	0.2767
R-Precision	
Exact	0.1980



Per-topic difference from median bpref for all Round 1 runs



Per-topic difference from median NDCG@10 for all Round 1 runs



Per-topic difference from median P@5 for all Round 1 runs