

## Round 1 results — Run SINEQUA submitted from Sinequa2

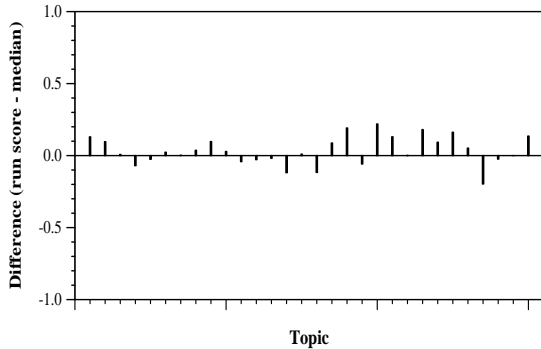
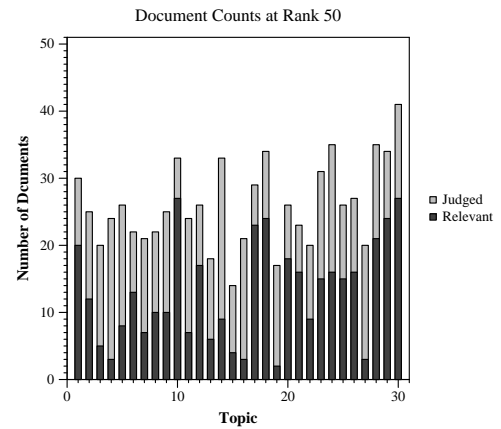
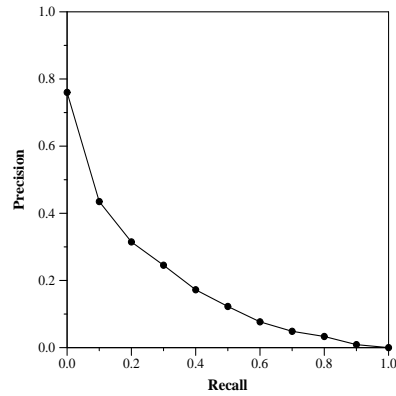
### Run Description

Results have been generated using Sinequa search engine relevance computation. We used our baseline computation, with additional configuration as well as query expansion

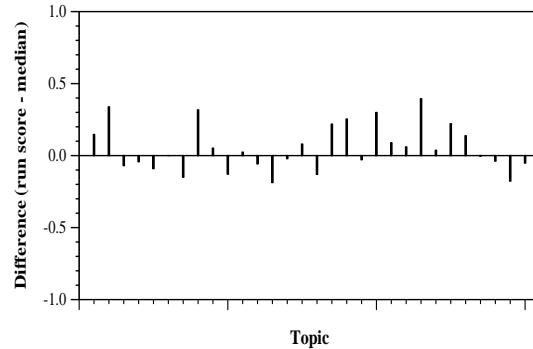
Summary Statistics	
Run ID	SINEQUA
Topic type	manual
Contributed to judgment sets?	yes

Overall measures	
Number of topics	30
Total number retrieved	28987
Total relevant	2352
Total relevant retrieved	1278
MAP	0.1723
Mean Bpref	0.3584
Mean NDCG@10	0.4082

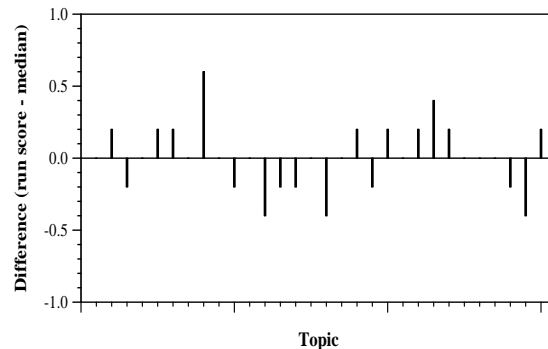
Document Level Averages	
	Precision
At 5 docs	0.4933
At 10 docs	0.4500
At 15 docs	0.4022
At 20 docs	0.3817
At 30 docs	0.3300
R-Precision	
Exact	0.2259



Per-topic difference from median bpref for all Round 1 runs



Per-topic difference from median NDCG@10 for all Round 1 runs



Per-topic difference from median P@5 for all Round 1 runs