

## Round 1 results — Run RUIR-bm25-mt-exp submitted from RUIR

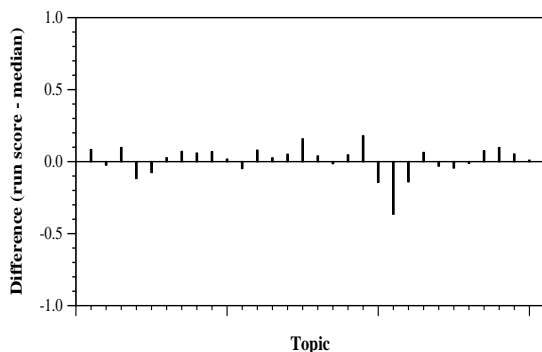
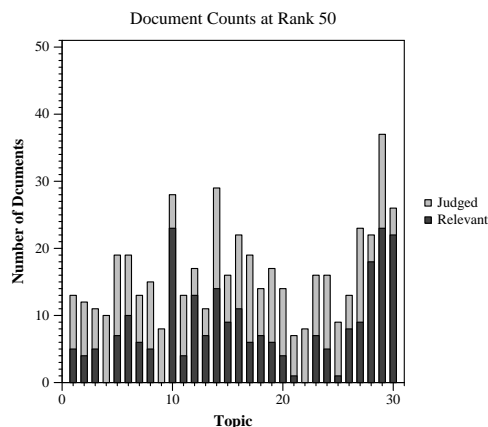
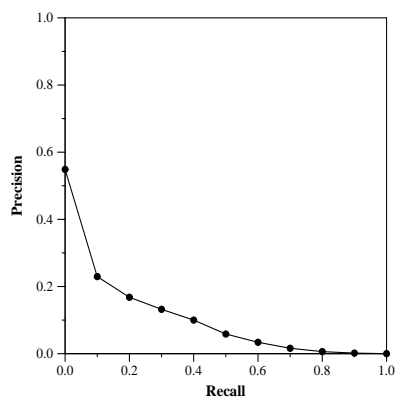
### Run Description

RUIR-bm25-mt-exp We interpreted the Kaggle tasks[0] as descriptions of search tasks, and performed query expansion using keywords typical for a given search task. TREC topics were manually classified into the most appropriate searchtask/kaggle task (in topic order—[2,0,3,0,3,7,3,7,6,5,4,5,0,0,0,7,5,5,1,0,0,1,1,1,7,7,3,3,3], referring to tasks in the order of the Kaggle tasks page accessed 4/23). The keywords for expansion were automatically selected from the fulltext task descriptions on Kaggle. The words in that text were ranked by TF-IDF, and words that clearly are not about the topic were filtered (~1 per task, except for the sample task). Then the top n=10 words were selected. These keywords were used as expansion terms to enrich the topic query of the corresponding task. This was done by appending these keywords to the query. Using this enriched query we ranked the documents using Anserini bm25 (fulltext+title+abstract). [0] <https://www.kaggle.com/allen-institute-for-ai/CORD-19-research-challenge/tasks>

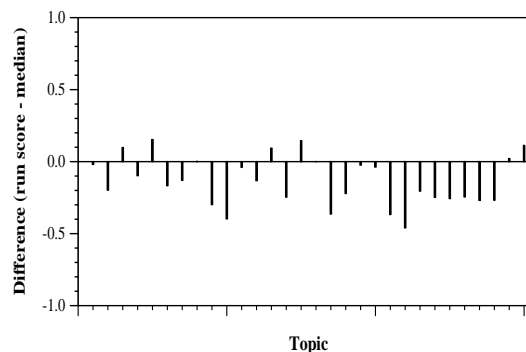
Summary Statistics	
Run ID	RUIR-bm25-mt-exp
Topic type	manual
Contributed to judgment sets?	yes

Overall measures	
Number of topics	30
Total number retrieved	30000
Total relevant	2352
Total relevant retrieved	1114
MAP	0.0904
Mean Bpref	0.3353
Mean NDCG@10	0.2229

Document Level Averages	
	Precision
At 5 docs	0.3200
At 10 docs	0.2867
At 15 docs	0.2444
At 20 docs	0.2167
At 30 docs	0.1800
R-Precision	
Exact	0.1438



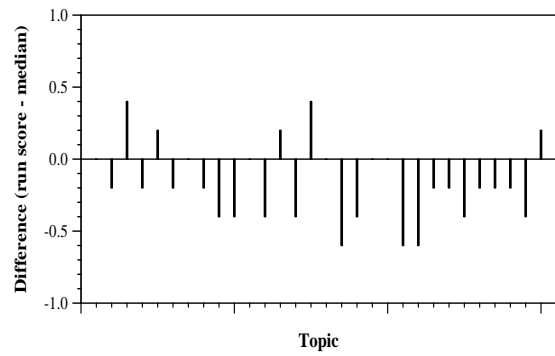
Per-topic difference from median bpref for all Round 1 runs



Per-topic difference from median NDCG@10 for all Round 1 runs

Round 1 results — Run RUIR-bm25-mt-exp submitted from RUIR

---



Per-topic difference from median P@5 for all Round 1 runs