

Round 1 results — Run NTU_NMLAB_BM25_Hum2 submitted from NTU_NMLab

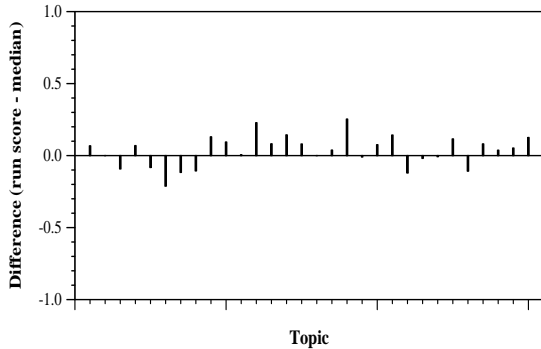
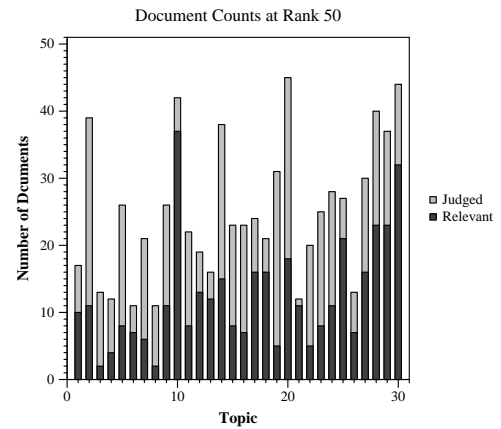
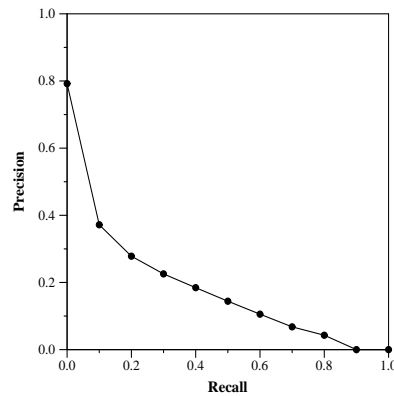
Run Description

Used Okapi BM25 model, with parameter $k=1.5$ and $b=0.75$. We captured all words of title, abstract, and whole body text session. For search query, we used human-crafted terms to search through the system.

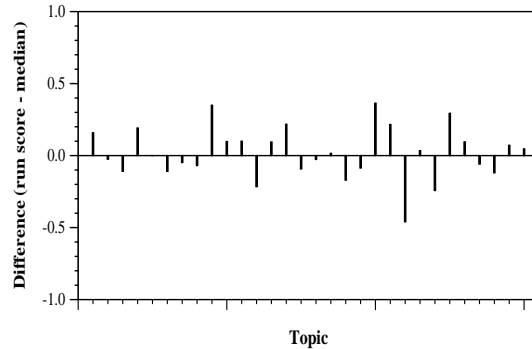
Summary Statistics	
Run ID	NTU_NMLAB_BM25_Hum2
Topic type	manual
Contributed to judgment sets?	yes

Overall measures	
Number of topics	30
Total number retrieved	30000
Total relevant	2352
Total relevant retrieved	1240
MAP	0.1710
Mean Bpref	0.3572
Mean NDCG@10	0.3756

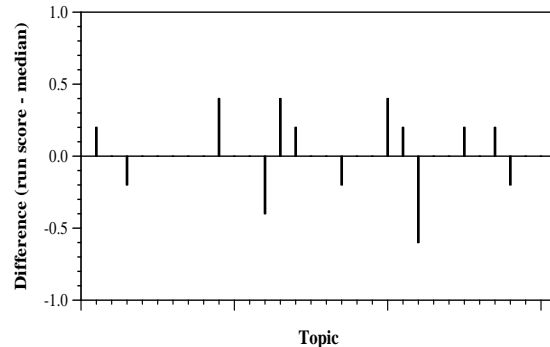
Document Level Averages	
	Precision
At 5 docs	0.5067
At 10 docs	0.4133
At 15 docs	0.3644
At 20 docs	0.3283
At 30 docs	0.2867
R-Precision	
Exact	0.2219



Per-topic difference from median bpref for all Round 1 runs



Per-topic difference from median NDCG@10 for all Round 1 runs



Per-topic difference from median P@5 for all Round 1 runs