

Round 1 results — Run KU_run2 submitted from IRLabKU

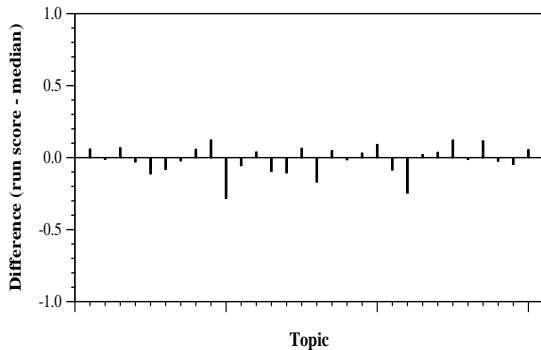
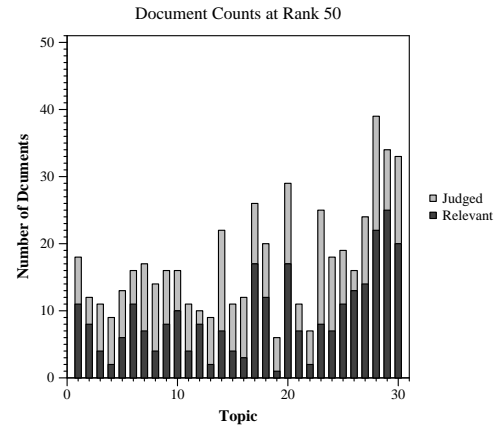
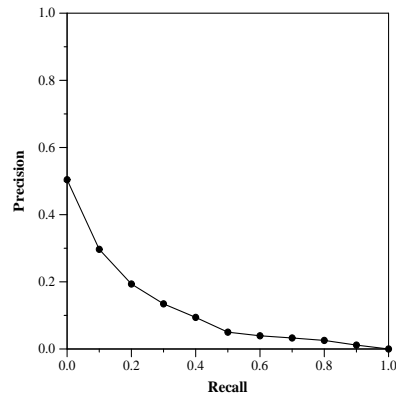
Run Description

This run uses query expansion using external data sources with different weights for different types of expanded terms. The external data sources we employ include Human Disease Ontology and Lexigram API. The HDO has been developed as a standardized human disease ontology, playing the role of providing consistent, reusable, and sustainable descriptions of human disease terms. As HDO is organized hierarchically, we retrieve the parent-class and the sub-class disease concepts. From Lexigram, we extract the entities from the original queries and types of entities. As a result, a query is expanded with potentially alternative disease terms, entity labels, and entity types. As a result, a query is expanded with potentially alternative disease terms, entity labels, and entity types. Specifically, we assign original query terms with weight 1.0, alternative disease terms 0.7, entity labels 0.4, and entity types 0.1. In practice, we use the Indri Language Model with Dirichlet smoothing with $\mu=2500$.

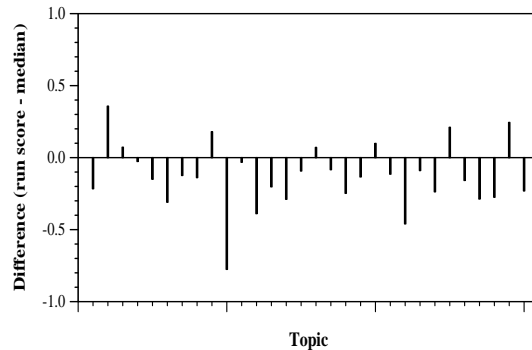
Summary Statistics	
Run ID	KU_run2
Topic type	manual
Contributed to judgment sets?	no

Overall measures	
Number of topics	30
Total number retrieved	30000
Total relevant	2352
Total relevant retrieved	994
MAP	0.1010
Mean Bpref	0.3101
Mean NDCG@10	0.2308

Document Level Averages	
	Precision
At 5 docs	0.2600
At 10 docs	0.2767
At 15 docs	0.2711
At 20 docs	0.2600
At 30 docs	0.2356
R-Precision	
Exact	0.1661

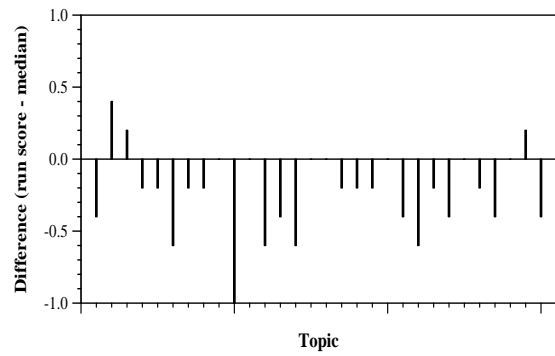


Per-topic difference from median bpref for all Round 1 runs



Per-topic difference from median NDCG@10 for all Round 1 runs

Round 1 results — Run KU_run2 submitted from IRLabKU



Per-topic difference from median P@5 for all Round 1 runs