

## Round 1 results — Run IRIT\_marked\_base submitted from IRIT\_markers

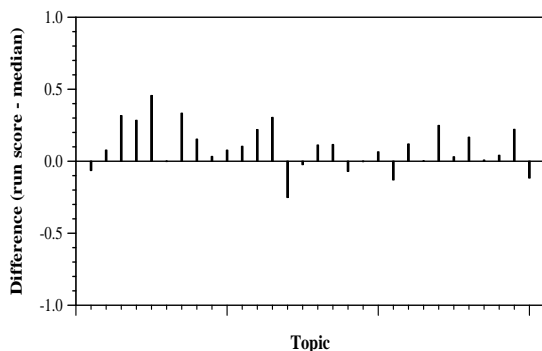
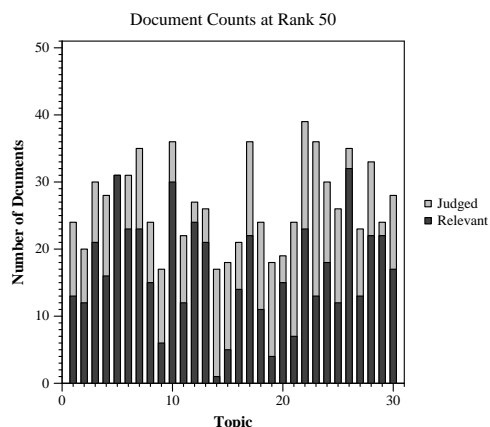
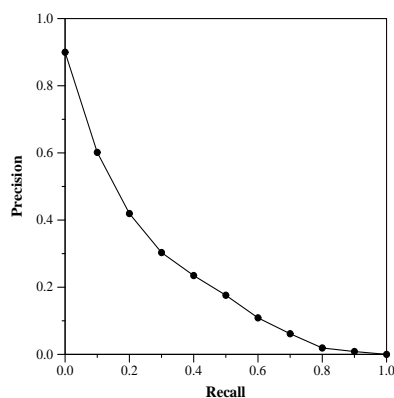
### Run Description

We use a BERT-base (12 layers, 768 hidden size) fine-tuned on Ms Marco passage set. We use a full ranking strategy with two stages: in the first stage, we use Anserini Bm25+ RM3 to retrieve top-1000 candidate documents for each topic using an index on the title+abstract of the CORD-19 documents, then we use the fine-tuned BERT to re-rank this list.

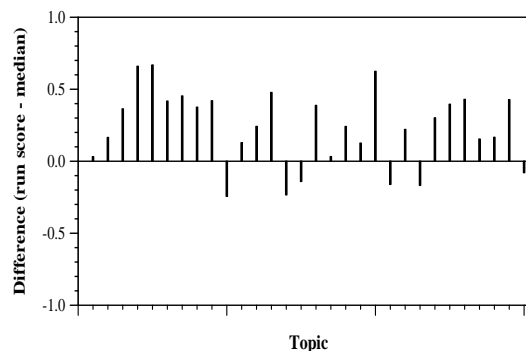
Summary Statistics	
Run ID	IRIT_marked_base
Topic type	automatic
Contributed to judgment sets?	yes

Overall measures	
Number of topics	30
Total number retrieved	29994
Total relevant	2352
Total relevant retrieved	1521
MAP	0.2309
Mean Bpref	0.4198
Mean NDCG@10	0.5880

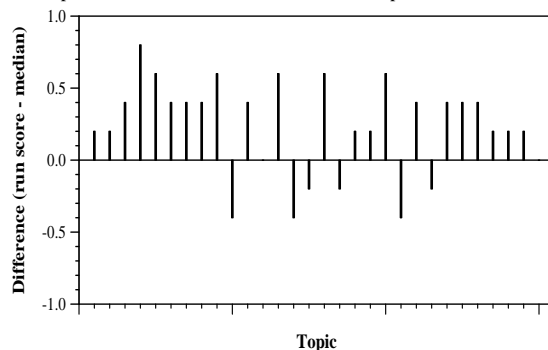
Document Level Averages	
	Precision
At 5 docs	0.7200
At 10 docs	0.6167
At 15 docs	0.5267
At 20 docs	0.4950
At 30 docs	0.4167
R-Precision	
Exact	0.2838



Per-topic difference from median bpref for all Round 1 runs



Per-topic difference from median NDCG@10 for all Round 1 runs



Per-topic difference from median P@5 for all Round 1 runs