

Round 1 results — Run BITEM_BL submitted from BITEM

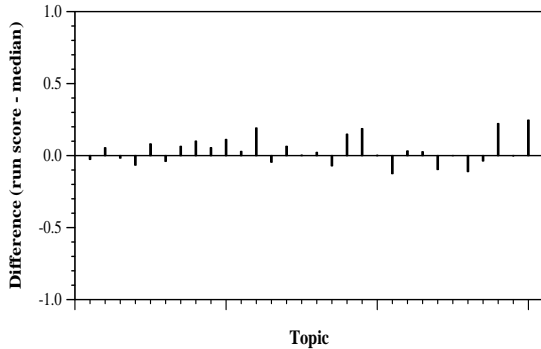
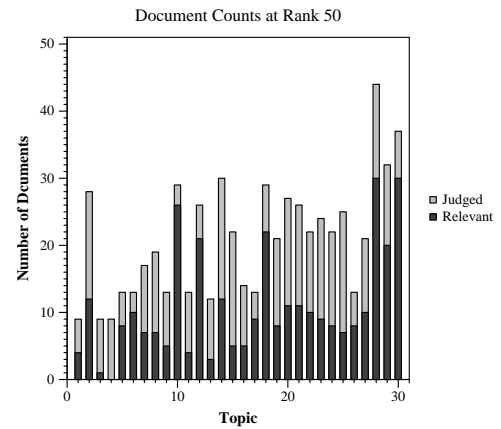
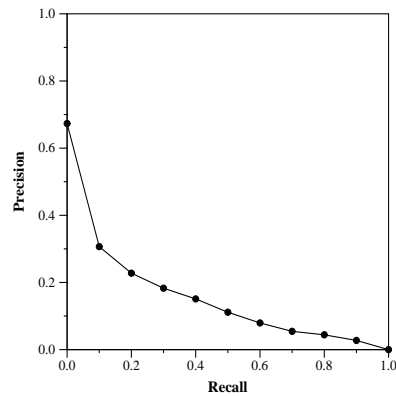
Run Description

Baseline run Documents with body text indexed in Elasticsearch. Queries made with <query>, <question>, and a subset of <narrative> words, filtered with their DF computed in PMC.

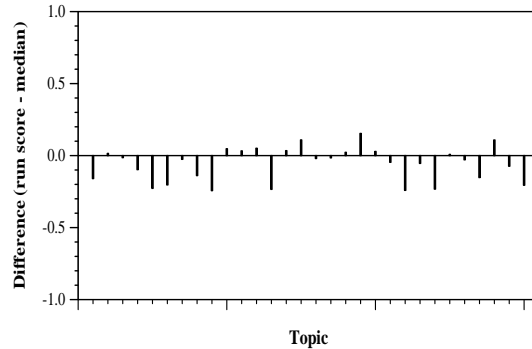
Summary Statistics	
Run ID	BITEM_BL
Topic type	automatic
Contributed to judgment sets?	no

Overall measures	
Number of topics	30
Total number retrieved	30000
Total relevant	2352
Total relevant retrieved	1218
MAP	0.1421
Mean Bpref	0.3591
Mean NDCG@10	0.2983

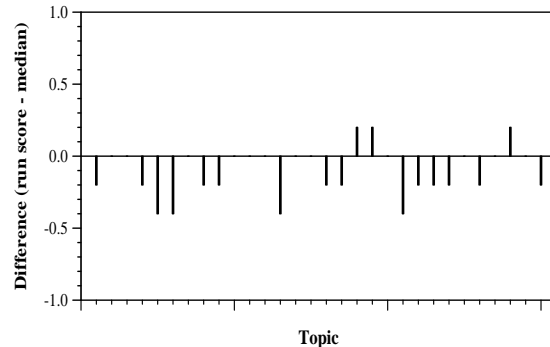
Document Level Averages	
	Precision
At 5 docs	0.3800
At 10 docs	0.3367
At 15 docs	0.3044
At 20 docs	0.2867
At 30 docs	0.2622
R-Precision	
Exact	0.2063



Per-topic difference from median bpref for all Round 1 runs



Per-topic difference from median NDCG@10 for all Round 1 runs



Per-topic difference from median P@5 for all Round 1 runs